



15.98%
Max Module Efficiency

260W
Max Power Output


12 Year
Product Warranty


25 Year
Linear Power Warranty


Certifications




XTM6-60BK

- 

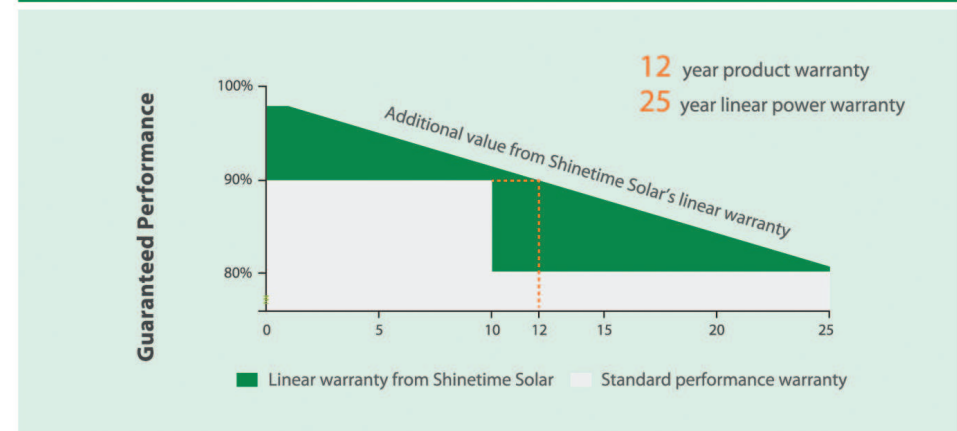
Positive tolerance
Guaranteed power output positive tolerance from 0 to 3%.
- 

Smart auto-recognition of weak light performance
Smart light auto-recognition under the condition of low irradiance and hazy light (mornings, evenings and cloudy days).
- 

Steady resistance to strong hailstone, wind and snow loads
Special frame construction certified to ensure high wind loads (2400 Pa), snow loads (5400 Pa) and hailstone (40mm/4.5m/s).
- 

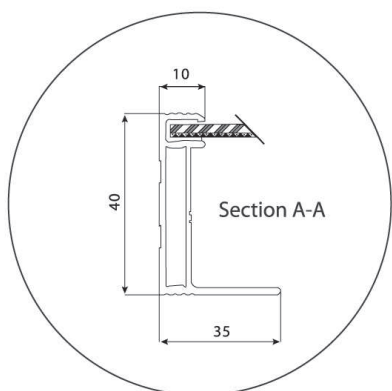
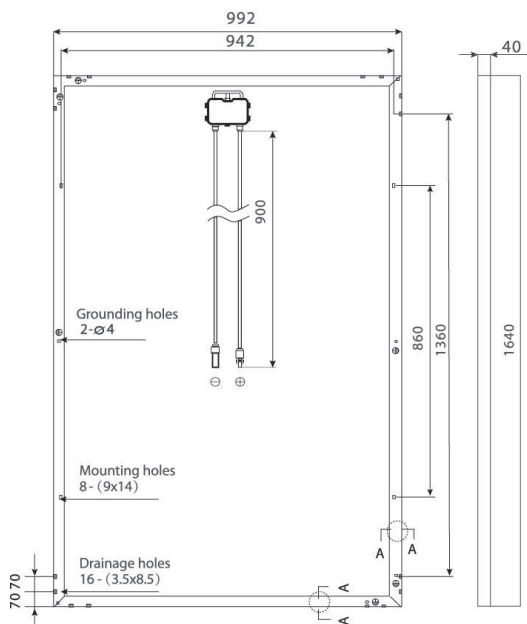
Certified manufacturing facility
Manufacturing facility certified by TÜV Rheinland to ISO 9001:2008, ISO 14001:2004.

Linear Performance Warranty





Unit: mm



Electrical Data @ STC

	XTM6-60-250BK	XTM6-60-255BK	XTM6-60-260BK	XTM6-60-265BK	XTM6-60-270BK
Peak Power Watts - P _{MAX} (Wp)	250	255	260	265	270
Nominal Power Voltage - V _{mp} (V)	30.3	30.6	30.8	31.1	31.3
Nominal Power Current - I _{mp} (A)	8.25	8.33	8.44	8.52	8.63
Open Circuit Voltage - V _{oc} (V)	37.7	37.9	38.1	38.3	38.5
Short Circuit Current - I _{sc} (A)	8.77	8.85	8.93	9.01	9.09
Module Efficiency - η _m (%)	15.37	15.67	15.98	16.29	16.60

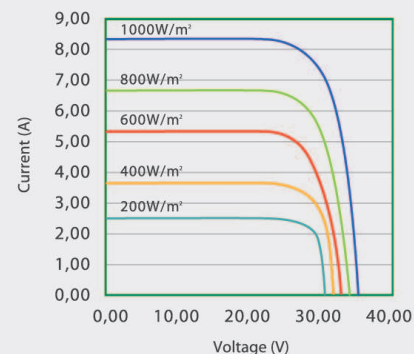
Values at Standard Test Conditions STC (Air Mass: AM1.5, Irradiance: 1000W/m², Cell Temperature: 25 °C).

Electrical Data @ NOCT

	XTM6-60-250BK	XTM6-60-255BK	XTM6-60-260BK	XTM6-60-265BK	XTM6-60-270BK
Maximum Power - P _{MAX} (W)	181	185	189	193	197
Maximum Power Voltage - V _{mp} (V)	27.6	27.7	27.8	27.9	28.0
Maximum Power Current - I _{mp} (A)	6.58	6.68	6.79	6.92	7.04
Open Circuit Voltage - V _{oc} (V)	35.1	35.2	35.2	35.3	35.4
Short Circuit Current - I _{sc} (A)	7.02	7.13	7.15	7.22	7.29

NOCT: Irradiance at 800W/m², Ambient Temperature 20 °C, Wind Speed 1m/s.

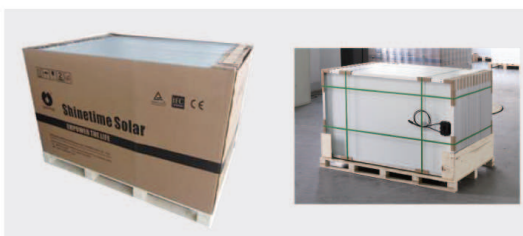
I-V Curves of PV Module XTM6-60BK



Average efficiency reduction of 4.5% at 200W/m² according to EN 60904-1.

Temperature Ratings

Nominal Operating Cell Temperature (NOCT)	(45±3) °C
Temperature Coefficient of P _{MAX}	(-0.412) %/k
Temperature Coefficient of V _{oc}	(-0.328) %/k
Temperature Coefficient of I _{sc}	(0.035) %/k



Operating Conditions

Maximum System Voltage	1000V _{dc}
Max Series Fuse Rating	15A
Operating Temperature Range	-40 °C ~+85 °C
Max. Static Load, Front	5400Pa
Max. Static Load, Back	2400Pa
Max. Hailstone Impact	40mm/4.5m/s

Mechanical Data

Solar Cells	Monocrystalline 156*156 mm (6 inches)
Cells Orientation	60 cells (6*10)
Module Dimension	1640*992*40 mm
Weight	19.5 kg
Glass	High transparency and low-iron tempered solar glass 3.2 mm (0.13 inches)
Frame	Black color anodized aluminum alloy
Junction Box	IP 67 rated
Cable	Photovoltaic technology cable: 4.0mm ² (0.006 inches ²), 900mm (35.4 inches),
Connector	MC4 Compatible/IP65 or MC4 Original/IP67

Warranty

- 12 year workmanship warranty
- 25 year linear performance warranty (12 year 90% power output, 25 year 80% power output)

Packing Configuration

26pcs per ctn, 2pcs per box, (2ctns+2boxes) per plt, 14 plts (784pcs) per 40'HQ