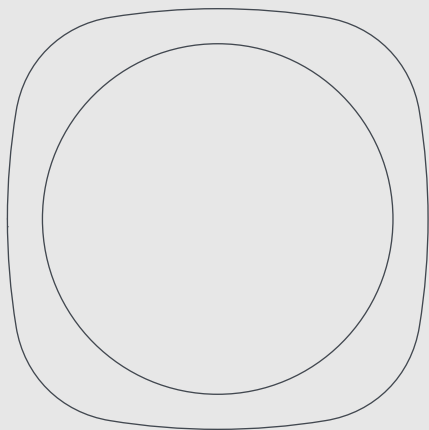


easee



Quick guide

Equalizer

IMPORTANT

Read carefully before use.

Keep for future reference.

You can find the latest version of this manual, other languages, answers to frequently asked questions and other useful information at **easee.support**.

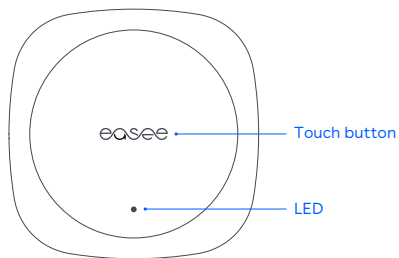
Intended use

This product is intended for optimizing the power consumption by performing an automatic load balancing between the Easee Charging Robot(s) and the building. It avoids overload and power interruption while charging the electric vehicle (EV).

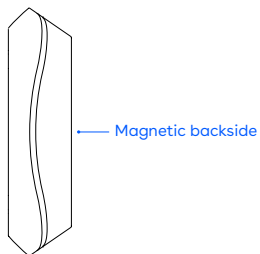
The product needs to be paired with a Charging Robot and connected to a compatible smart meter with the cable provided. In order for the Equalizer to work, the smart meter's HAN port needs to be activated. The product may only be operated with the approved operating parameters and under the specified environmental conditions (see pages 5 and 9). Do not use the product if it is damaged or does not function properly.

Uses other than those specified here are not permitted.

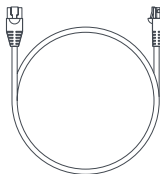
Product overview



Equalizer



(side view)



Cable

Wall mounting kit
(for non-metallic surfaces)



x1



x1

Technical specifications

General

Product (mm): H: 110 x W: 110 x D: 27.5
Packaging (mm): H: 130 x W: 130 x D: 39
Operating temperature: -20 °C to +50 °C
Weight: 110 g
IP degree: IP40
Supply: 20-32 VDC 30mA
RJ11 connector

Installation

Cable length: 1.5 m
RJ11 to RJ45 custom made cable
Extended with a RJ45 adapter (up to 200 m)

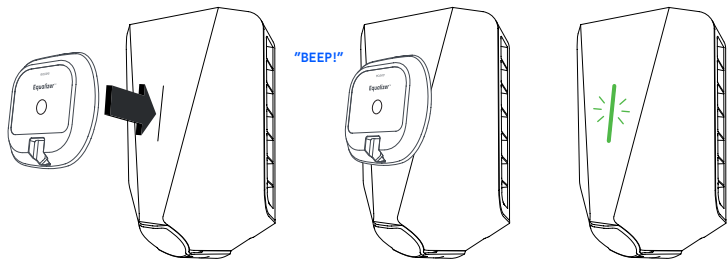
Connectivity

Easee Link RF™ and WiFi*
HAN connection to energy meter
Monitor power consumption with the Easee app
RFID / NFC reader
*WiFi is required for normal operation. When offline,
it will continue to work via Easee Link RF™.

1 Charging Robot Pairing

Before you start: make sure your Easee charger is connected to the same WiFi as you want the Equalizer to connect to. The Equalizer does not need to be connected to a power source during this step.

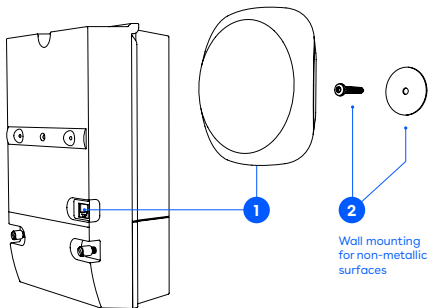
1. Have the **front side** of the Equalizer facing the charger.
2. Take it slowly forward so that it covers the light strip on the charger.
3. When you hear a beep and the light strip lights up green, the pairing is complete.
If the pairing fails, wait 5 seconds and try again.



2 ^{Fuse box} Connecting

1. Plug the Equalizer into a HAN port with the provided cable. In most cases, the HAN port will be inactive. You can still pair your Equalizer to the Charger, but it will not work until you contact your utility company to open the HAN port for 3rd party use. After around 30 seconds, it should start flashing in white while connecting to your WiFi. Once connected, it is automatically added to the Easee app!
2. Place the magnetic backside of the Equalizer directly on a metallic surface. If a metallic surface is not available, fix the metallic disc with a screw on the wall and then snap the Equalizer to it.

NOTICE! For better communication with the Easee charger, place the Equalizer outside of the fuse cabinet. When outdoors, it should be protected from the weather, e.g. inside the fuse box (see page 9).



What do the LED colors mean?



White, fast flashing - Booting



White, breathing every 10s - Normal operation



Red / white, switching - No WiFi added¹



Red, flashing - No data from power meter²



Red, breathing every 10s - Error³



Purple, breathing every 10s - Offline operation⁴



Touch the Easee logo in the middle to check power consumption:



Blue, fast flashing - High power consumption

Blue, slow flashing - Low power consumption

Count the flashes for percentage - 1 flash (10%),
2 flashes (20%), up to 10 flashes (100%)



Hold the Easee logo for 3 seconds to check connectivity. You will see 2 flashes:

1st flash - Easee Link RF status

2nd flash - WiFi status



Green - Connected



Red - Not connected

¹Use the Easee App to set up the WiFi.

²Contact your utility company to activate the HAN port.

³Go to <http://easee.support>.

⁴Check your internet connection.

Practical details

Charge faster

The Equalizer makes it possible to charge smarter, safer and faster if the installation is scaled accordingly. To enable its true potential, the rated value of the chargers circuit fuse should be as high as possible compared to the main fuse. Even in 1-phase setups, we recommend using a 3-phase cable to future proof the installation.

Protection

The Equalizer is IP40. This means it has no protection against water. If placed outside the house, it must be installed inside a cabinet protected from the weather.

Standards

The EU Declaration of Conformity is available at the following address: **[easee.support](#)**.

Max transmitted power

Radio: 100 mW at 863–870 MHz.
WiFi: 50 mW at 2.4–2.472 GHz.

Maintenance

This product requires no maintenance. If it needs to be repaired, please contact your Easee supplier.

Storage

The product should be stored in a tempered, dry and well-ventilated area in order to preserve the packaging and its contents. Relative humidity should not exceed 80% and no corrosive gas should be present. Storage or transportation environment should never exceed the limits provided in the technical specifications (see page 5).

Disposal



This electronic equipment must not be disposed of in household waste. For the return of old devices, free collection and acceptance points may be available in your vicinity. Observe local regulations for correct and environmentally friendly disposal.

Returns and complaints

Contact your distributor or Easee Customer Support at **easee.support** regarding the return and complaint of your product.

Contact details

Easee AS
Grenseveien 19
4313 Sandnes, Norway
Org. nr: 920 292 046

You can find additional contact details for your country at **[easee.com](https://www.easee.com)**.

THIS DOCUMENT CONTAINS INFORMATION THAT IS
SUBJECT TO CHANGE WITHOUT NOTICE.

The latest version of this publication can be
downloaded at <http://easee.support>

No part of this publication may be reproduced or
transmitted in any form or by any means, electronic
or mechanical, including, but not limited to, copying,
recording, retrieving data, or computer networks
without the written permission of Easee AS.

Easee and all other Easee product names and slogans
are trademarks or registered trademarks of Easee
AS. Easee products can be protected by one or more
patents.

All other products and services mentioned may be
trademarks or service marks of their respective owners.

Illustrations of the product and user interface are
exemplary and may differ from the actual appearance.

May 2021 - Version 1.05

© 2020 by Easee AS. All rights reserved.

easee

Easee AS
Grenseveien 19
4313 Sandnes, Norway

www.easee.com