

72M HC 520-540 Watt

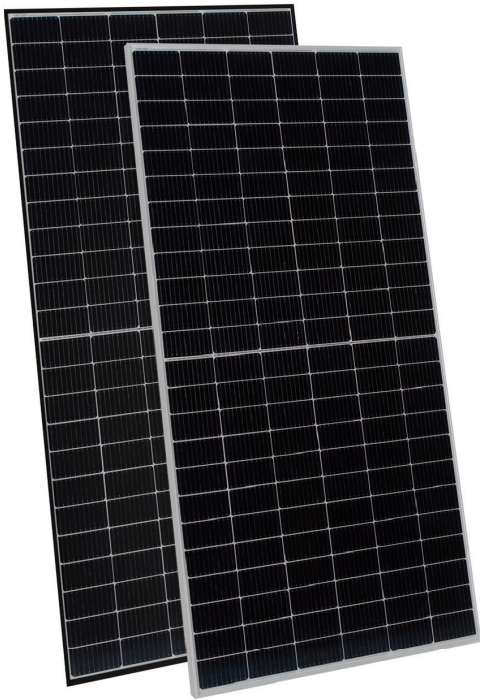
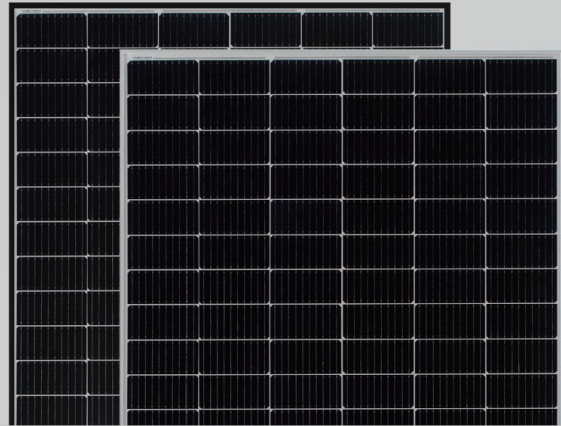
MONOCRYSTALLINE MODULE

Positive power tolerance of 0~+3%

ISO9001:2015, ISO14001:2015, ISO45001:2018 certified factory.

IEC61215(2016), IEC61730(2016), certified products.

TIGER Pro



KEY FEATURES



Multi Busbar Solar Cell

MBB solar cell adopts new technology to improve the efficiency of modules, offers a better aesthetic appearance, making it perfect for rooftop installation.



PID Resistance

Excellent Anti-PID performance guarantee limited power degradation for mass production.



Higher Lifetime Power Yield:

0.55% annual power degradation
25 year linear power warranty



Low-light Performance

Advanced glass and cell surface textured design ensure excellent performance in low-light environment.



Severe Weather Resilience

Certified to withstand: wind load (2400 Pascal) and snow load (5400 Pascal).

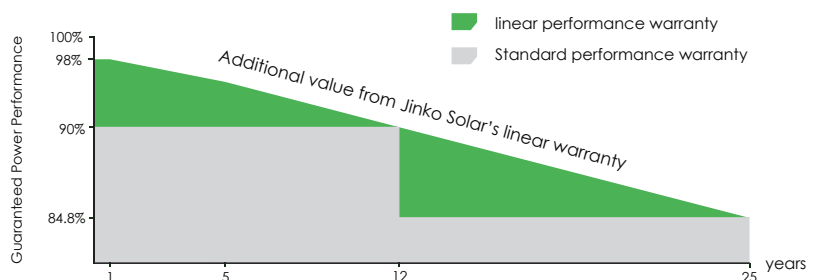


Durability Against Extreme Environmental Conditions

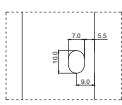
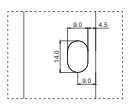
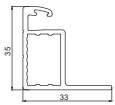
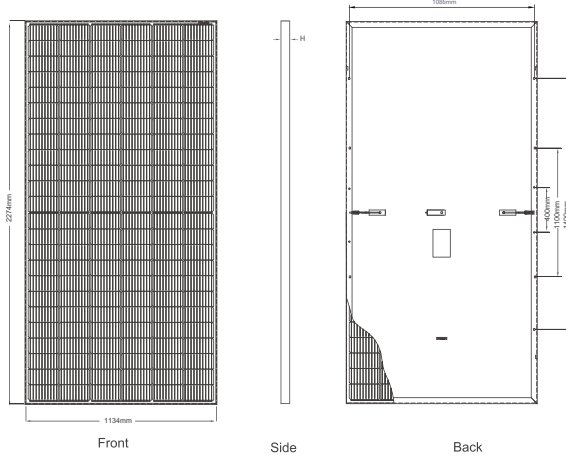
High salt mist and ammonia resistance certified by TUV NORD.

LINEAR PERFORMANCE WARRANTY

12 Year Product Warranty • 25 Year Linear Power Warranty
0.55% Annual Degradation Over 25 years



Engineering Drawings



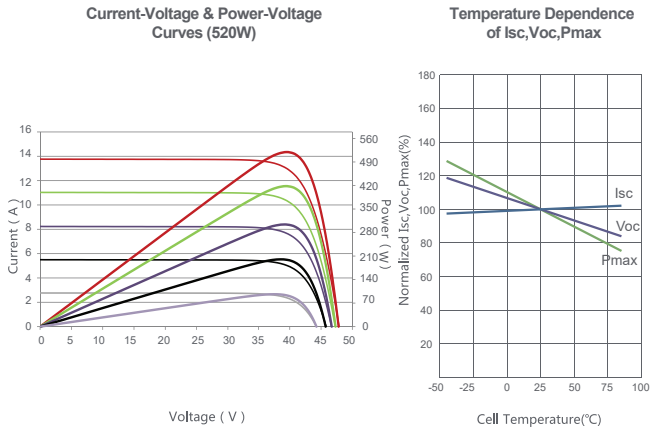
Length: $\pm 2\text{mm}$
 Width: $\pm 2\text{mm}$
 Height: $\pm 1\text{mm}$
 Row Pitch: $\pm 2\text{mm}$

Packaging Configuration

(Two pallets = One stack)

31pcs/pallets, 62pcs/stack, 620pcs/ 40'HQ Container

Electrical Performance & Temperature Dependence



Mechanical Characteristics

Cell Type	P type Mono-crystalline
No. of cells	144 (6×24)
Dimensions	2274×1134×35mm (89.53×44.65×1.38 inch)
Weight	28.9 kg (63.7 lbs)
Front Glass	3.2mm, Anti-Reflection Coating, High Transmission, Low Iron, Tempered Glass
Frame	Anodized Aluminium Alloy
Junction Box	IP68 Rated
Output Cables	TUV 1×4.0mm ² (+): 250mm, (-): 150 mm or Customized Length

SPECIFICATIONS

Module Type	MM520-72HLD-MBV		MM525-72HLD-MBV		MM530-72HLD-MBV		MM535-72HLD-MBV		MM540-72HLD-MBV	
	STC	NOCT	STC	NOCT	STC	NOCT	STC	NOCT	STC	NOCT
Maximum Power (Pmax)	520Wp	387Wp	525Wp	391Wp	530Wp	394Wp	535Wp	398Wp	540Wp	402Wp
Maximum Power Voltage (Vmp)	40.41V	37.52V	40.48V	37.67V	40.56V	37.84V	40.63V	37.91V	40.70V	38.08V
Maximum Power Current (Imp)	12.87A	10.31A	12.97A	10.37A	13.07A	10.42A	13.17A	10.50A	13.27A	10.55A
Open-circuit Voltage (Voc)	49.10V	46.34V	49.18V	46.42V	49.26V	46.50V	49.34V	46.57V	49.42V	46.65V
Short-circuit Current (Isc)	13.57A	10.96A	13.64A	11.02A	13.71A	11.07A	13.79A	11.14A	13.85A	11.19A
Module Efficiency STC (%)	20.17%		20.36%		20.55%		20.75%		20.94%	
Operating Temperature(°C)	-40°C~+85°C									
Maximum system voltage	1500VDC (IEC)									
Maximum series fuse rating	25A									
Power tolerance	0~+3%									
Temperature coefficients of Pmax	-0.35%/°C									
Temperature coefficients of Voc	-0.28%/°C									
Temperature coefficients of Isc	0.048%/°C									
Nominal operating cell temperature (NOCT)	45±2°C									

* STC: Irradiance 1000W/m² Cell Temperature 25°C

AM=1.5

NOCT: Irradiance 800W/m² Ambient Temperature 20°C

AM=1.5

Wind Speed 1m/s

* Power measurement tolerance: $\pm 3\%$