

SOLAR'S MOST TRUSTED



PACKAGING & SHIPMENT SPECIFICATIONS

Applicable for the following REC solar panels:

REC Alpha Series

REC Alpha Black Series

REC Alpha 72 Series

REC Alpha Pure Series



FRAGILE

EXCEPT WHEN
LOADING/UNLOADING
TO CONTAINER

MAX. 2

CONTENTS

INTRODUCTION	3
Quality.....	3
Pallet Handling.....	3
Recycling.....	3
REC ALPHA SERIES	4
REC Alpha Series.....	4
REC Alpha Black Series.....	4
REC ALPHA PURE SERIES	5
REC Alpha Pure Series.....	5
REC ALPHA 72 SERIES	6
REC Alpha 72 Series.....	6

INTRODUCTION

REC believes that the packaging of our products is just as important as the product itself. To ensure our solar panels arrive with our customers in as good condition as possible, REC takes every care to ensure a high quality level of packaging and uses international testing standards to ensure the panels reach their destination in the best condition. Except where specifically stated, the information given on the following pages is relevant to all modules in the product family named and is therefore applicable to all product variants, e.g., different colored frames, backsheets, and/or cell types. The images shown are a generic representation of the instructions regardless of color or exact design.



PALLET HANDLING

This document contains instructions concerning the use and handling of pallets of REC solar panels. Following these instructions will ensure that the panels are in the best condition upon arrival at the installation site. Misuse or failure to follow these procedures may lead to damage or injury, and may invalidate the warranty on the product.

QUALITY

REC performs a quality check on all pallets before and during loading. Vehicles will only be loaded if they are deemed safe and serviceable. During transportation, the pallets are stably loaded in protected containers with air bags between them to secure them in position. The freight company and driver are responsible for ensuring suitable load safety for each delivery vehicle. Vehicles without suitable load safety measures will not be loaded. Loading without the use of air bags or loading belts to secure the pallets may lead to damage to the pallet(s) and/or module(s) during transportation which may invalidate the warranty. If using loading belts to secure pallets, ensure these are correctly fitted as over-tightening may cause damage to the modules or pallet(s).



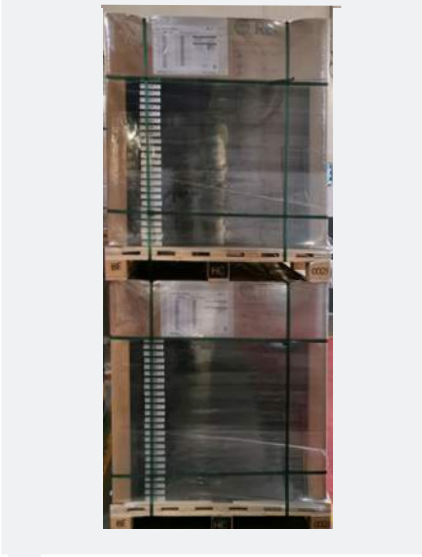
RECYCLING

REC makes every effort to ensure the panel packaging is kept to a minimum and that environmentally-friendly materials are used wherever possible. This minimizes waste and discarded items to dispose of at the installation site. The wooden pallets can be re-used or recycled. The paper and cardboard packaging used on REC pallets can be also be widely recycled and the protective wrapping and panel separating blocks are also recyclable in many areas. Please check for all applicable procedures and recycle all packaging and panels according to local guidelines and regulations. REC makes every effort to ensure environmentally-friendly packaging materials are used. Please recycle whenever possible.

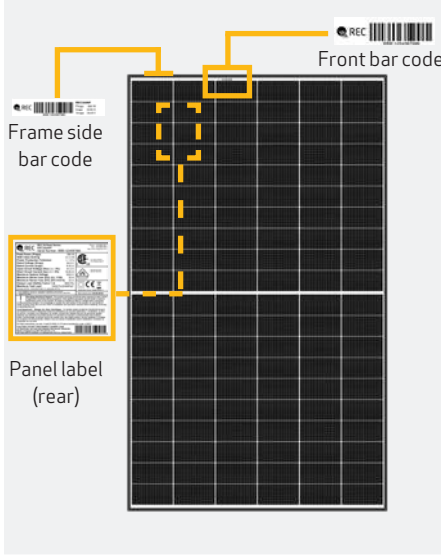
REC ALPHA SERIES

These packaging specifications are applicable to the following products:
 REC Alpha Series REC Alpha Black Series

PALLET FRONT VIEW (DOUBLE STACKED)



PANEL IDENTIFICATION



PALLET SHIPMENT DIMENSIONS

Length of pallet:	1769 mm (70 in)
Width of pallet:	1064 mm (42 in)
Height of single pallet stack:	1225 mm (48 in)
Height of double pallet stack:	2450 mm (96 in)
Pallet weight:	42 kg (93 lbs)
Stack weight (pallet + panels):	ca. 686 kg (1512 lbs)

DELIVERY INFORMATION

Panels per pallet:	33
Panels per 40 ft GP/high cube container:	858 (26 pallets)
Panels per 13.6 m truck:	990 (30 pallets)
Panels per 53 ft truck:	957 (29 pallets)

PALLET SIDE VIEW (DOUBLE STACKED)



PALLET STACKING



DELIVERY DOCUMENTATION

Documentation is located on short side of pallet.
 Pallet documentation includes:

- Module flash data
- Serial number
- Product name
- Watt class

PACKAGING MATERIAL

Pallet:	Wood
Foam pad:	Polyurethane Polyether Polyol
Top cover:	Corrugated cardboard
Edge protectors:	Core board - Kraft
Corner pieces and spacers:	HDPE

PACKAGING DOCUMENTATION

REC350AA REC

Part: **6001858** Pallet No: **M125199_AAAA**

No.	Serial Number	Top	Qty(N)	Qty(W)	No.	Serial Number	Top	Qty(N)	Qty(W)
1)	208778629	8428	323.8	33	208778630	8426	323.8		
2)	208778631	8447	323.8	33	208778632	8446	323.8		
3)	208778633	8484	323.8	36	208778634	8427	323.8		
4)	208778635	8441	323.8	33	208778636	8426	323.8		
5)	208778637	8473	324.8	33	208778638	8429	323.8		
6)	208778639	8489	323.8	33	208778640	8427	323.8		
7)	208778641	8441	323.8	34	208778642	8426	323.8		
8)	208778643	8424	323.8	26	208778644	8429	323.8		
9)	208778645	8442	324.8	34	208778646	8427	323.8		
10)	208778647	8425	323.8	27	208778648	8429	323.8		
11)	208778649	8426	324.8	26	208778650	8426	323.8		
12)	208778651	8447	324.8	29	208778652	8422	323.8		
13)	208778653	8475	324.8	30	208778654	8426	323.8		
14)	208778655	8441	324.8	31	208778656	8429	323.8		
15)	208778657	8448	323.8	32	208778658	8428	324.8		
16)	208778659	8429	323.8	33	208778660	8426	323.8		
17)	208778661	8428	324.7						

Bottom

Modules: 33

Attention! **Vorsicht!**

Weight: NA Gewicht: NA

Improper handling will damage the content. Unschonemaler Transport führt zur Beschädigung der Ware

Quality Stamp Panel Handling

QUALITY 14/05/2019 10:50 ACCEPTED **Attention** Wear clean gloves

Installation instructions: [Installationsanleitungen:](#)
 Clavis de montage: [安装指南](#)
www.recgroup.com/download

Made in Singapore

- Pallet No. 1 is the top module in a stack
- Pallet No. 33 is the lowest module in a stack
- Pallet documentation shows:
 - Module serial number
 - Module bar code
 - Manufacturing date
 - Electrical data (I_{SC} , I_{MP} , V_{OC} , V_{MP} , P_{MP} , Fill Factor)

STORAGE AND TRANSPORTATION

Stacking for storage: 2 pallets max
 Stacking for transportation: 2 pallets max

Note: When double stacking pallets, ensure the upper pallet sits securely on the edge protector to avoid damage to the lower pallet during transportation or handling

Note: Pallets delivered stacked are not bound together

MINIMUM FORK LENGTHS FOR TRANSPORTATION

		Single/Double stack only
Forklift	Long side	1.2 m (47 in) Loading & unloading of container only
	Short side	1.5 m (59 in)
Pallet jack	Long side	X
	Short side	1.5 m (59 in)

Note: Forks must be spaced a minimum of 500 mm apart
 Handlers must ensure that vehicles used for REC pallets can handle the specified load safely.

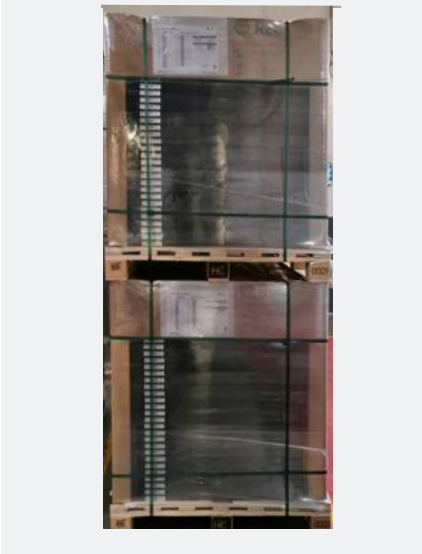
Note: Specifications subject to change without notice



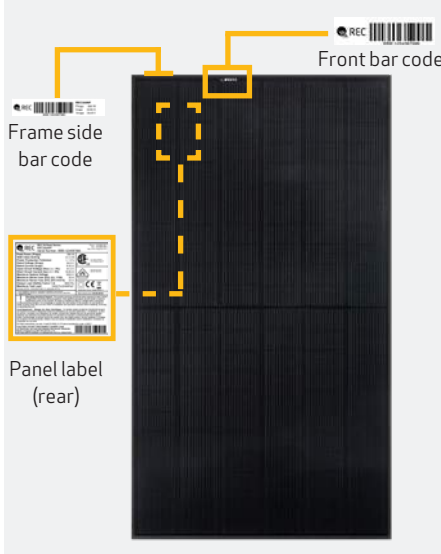
REC ALPHA PURE SERIES

These packaging specifications are applicable to the following products:
REC Alpha Pure Series

PALLET FRONT VIEW (DOUBLE STACKED)



PANEL IDENTIFICATION



PALLET SHIPMENT DIMENSIONS

Length of pallet:	1880 mm (74 in)
Width of pallet:	1055 mm (41.5 in)
Height of single pallet stack:	1205 mm (47.5 in)
Height of double pallet stack:	2410 mm (95 in)
Pallet weight:	41 kg (90.4 lbs)
Stack weight (pallet + panels):	ca. 735 kg (1620 lbs)

DELIVERY INFORMATION

Panels per pallet:	33
Panels per 40 ft GP/high cube container:	792 (24 pallets)
Panels per 13.6 m truck:	924 (28 pallets)
Panels per 53 ft truck:	891 (27 pallets)

PALLET SIDE VIEW (DOUBLE STACKED)



PALLET STACKING



DELIVERY DOCUMENTATION

Documentation is located on short side of pallet.
Pallet documentation includes:

- Module flash data
- Serial number
- Product name
- Watt class

PACKAGING MATERIAL

Pallet:	Wood
Foam pad:	Polyurethane Polyether Polyol
Top cover:	Corrugated cardboard
Edge protectors:	Core board - Kraft
Corner pieces and spacers:	HDPE

PACKAGING DOCUMENTATION

REC395AA Pure

Part: **Top 2462** Pallet No: **L3394796_AAAA**

Serial Number	Length	Height	Serial Number	Length	Height
1. 48871751	4.481	586.7	19. 48871781	4.741	586.8
2. 48871752	4.481	586.7	20. 48871782	4.741	586.8
3. 48871753	4.481	586.7	21. 48871783	4.741	586.8
4. 48871754	4.481	586.7	22. 48871784	4.741	586.8
5. 48871755	4.481	586.7	23. 48871785	4.741	586.8
6. 48871756	4.481	586.7	24. 48871786	4.741	586.8
7. 48871757	4.481	586.7	25. 48871787	4.741	586.8
8. 48871758	4.481	586.7	26. 48871788	4.741	586.8
9. 48871759	4.481	586.7	27. 48871789	4.741	586.8
10. 48871760	4.481	586.7	28. 48871790	4.741	586.8
11. 48871761	4.481	586.7	29. 48871791	4.741	586.8
12. 48871762	4.481	586.7	30. 48871792	4.741	586.8
13. 48871763	4.481	586.7	31. 48871793	4.741	586.8
14. 48871764	4.481	586.7	32. 48871794	4.741	586.8
15. 48871765	4.481	586.7	33. 48871795	4.741	586.8
16. 48871766	4.481	586.7			
17. 48871767	4.481	586.7			
18. 48871768	4.481	586.7			

Modules: 33

REC

Weight: 185 kg (408 lbs) Max
Temperature handling and storage: see datasheet

Max H: 735 kg (1620 lbs)
Max. height in transport: see data sheet
Max. height in use: see data sheet

Quality Status: **Pass** (4/10/19)

Attention
Wear safety glasses

Made in Singapore

- Pallet No. 1 is the top module in a stack
- Pallet No. 33 is the lowest module in a stack
- Pallet documentation shows:
 - Module serial number
 - Module bar code
 - Manufacturing date
 - Electrical data (I_{SC} , I_{MP} , V_{OC} , V_{MP} , P_{MP} , Fill Factor)

STORAGE AND TRANSPORTATION

Stacking for storage:	2 pallets max
Stacking for transportation:	2 pallets max

Note: When double stacking pallets, ensure the upper pallet sits securely on the edge protector to avoid damage to the lower pallet during transportation or handling

Note: Pallets delivered stacked are not bound together

MINIMUM FORK LENGTHS FOR TRANSPORTATION

		Single/Double stack only
Forklift	Long side	1.2 m (47 in)
	Short side	1.5 m (59 in)
Pallet jack	Long side	X
	Short side	1.5 m (59 in)

Note: Forks must be spaced a minimum of 500 mm apart
Handlers must ensure that vehicles used for REC pallets can handle the specified load safely.

Note: Specifications subject to change without notice



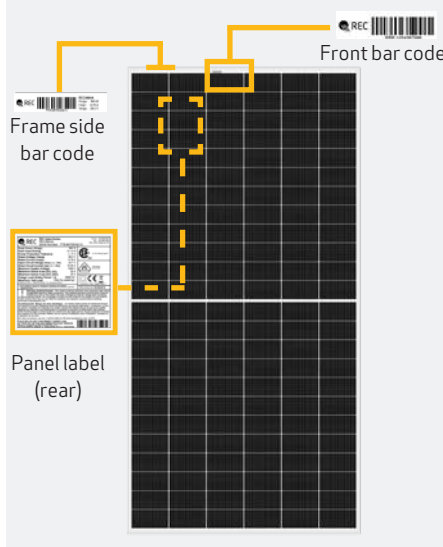
REC ALPHA 72 SERIES

These packaging specifications are applicable to the following products:
REC Alpha 72 Series

PALLET FRONT VIEW (DOUBLE STACKED)



PANEL IDENTIFICATION



PALLET SHIPMENT DIMENSIONS

Length of pallet:	2100 mm (83 in)
Width of pallet:	1074 mm (42 in)
Height of single pallet stack:	1205 mm (47 in)
Height of double pallet stack:	2410 mm (95 in)
Pallet weight:	45 kg (99 lbs)
Stack weight (pallet + panels):	ca. 824 kg (1817 lbs)

DELIVERY INFORMATION

Panels per pallet:	33
Panels per 40 ft GP/high cube container:	726 (22 pallets)
Panels per 13.6 m truck:	792 (24 pallets)
Panels per 53 ft truck:	792 (24 pallets)

PALLET SIDE VIEW (DOUBLE STACKED)



PALLET STACKING



DELIVERY DOCUMENTATION

Documentation is located on short side of pallet.
Pallet documentation includes:

- Module flash data
- Serial number
- Product name
- Watt class

PACKAGING MATERIAL

Pallet:	Wood
Foam pad:	Polyurethane Polyether Polyol
Top cover:	Corrugated cardboard
Edge protectors:	Core board - Kraft
Corner pieces and spacers:	HDPE

PACKAGING DOCUMENTATION

REC440AA 72 XV

Part: **6002117** Pallet No: **L3353510_AAAA**

REC +

No.	Serial Number	Imp(A)	Prog(W)	No.	Serial Number	Imp(A)	Prog(W)
1	4407217589	9.967	442.8	18	4407217584	9.969	442.5
2	4407218036	9.969	442.5	19	4407218039	9.962	442.5
3	4407217550	9.962	442.8	20	4407217595	9.965	442.4
4	4407217516	9.962	442.8	21	4407217554	9.964	442.5
5	4407217538	9.963	442.6	22	4407218042	9.969	442.7
6	4407217578	9.962	442.2	23	4407218029	9.967	442.7
7	4407218074	9.959	442.7	24	4407218021	9.972	442.6
8	4407218035	9.962	442.4	25	4407218042	9.961	442.6
9	4407218074	9.968	442.8	26	4407218032	9.961	442.6
10	4407218074	9.969	442.8	27	4407218054	9.972	442.4
11	4407217559	9.970	442.2	28	4407218036	9.951	442.5
12	4407218028	9.967	442.4	29	4407218042	9.959	442.5
13	4407217535	9.958	442.3	30	4407217536	9.966	442.4
14	4407217595	9.969	442.3	31	4407218047	9.967	442.5
15	4407217559	9.928	442.8	32	4407218078	9.954	442.5
16	4407217598	9.963	442.8	33	4407218078	9.969	442.9
17	4407218021	9.928	442.8				

Modules: 33

Bottom

Made in Singapore

Qualitätsstempel: 03.10.2020 12:59 ACCEPTED

Vorsicht! Unachtsamer Transport führt zur Beschädigung der Ware. Attention! Unachtsamer Transport führt zur Beschädigung der Ware. Wear clean gloves

Qualitätsstempel: 03.10.2020 12:59 ACCEPTED

Installationanleitung: Guides d'emploi: 01.25.2019.01

www.recgroup.com/usa/usa.de

STORAGE AND TRANSPORTATION

Stacking for storage:	2 pallets max
Stacking for transportation:	2 pallets max

Note: When double stacking pallets, ensure the upper pallet sits securely on the edge protector to avoid damage to the lower pallet during transportation or handling

Note: Pallets delivered stacked are not bound together

MINIMUM FORK LENGTHS FOR TRANSPORTATION

		Single/Double stack only
Forklift	Long side	1.2m (47 in)
	Short side	1.8m (71 in)
Pallet jack	Long side	X
	Short side	1.8m (71 in)

Note: Forks must be spaced a minimum of 500 mm apart
Handlers must ensure that vehicles used for REC pallets can handle the specified load safely.

Note: Specifications subject to change without notice

- Pallet No. 1 is the top module in a stack
- Pallet No. 33 is the lowest module in a stack
- Pallet documentation shows:
 - Module serial number
 - Module bar code
 - Manufacturing date
 - Electrical data (I_{SC} , I_{MP} , V_{OC} , V_{MP} , P_{MP} , Fill Factor)





REC SOLAR PTE. LTD.
20 TUAS SOUTH AVENUE 14
SINGAPORE 637312
SINGAPORE
Tel: +65 6495 9228
Mail: post@recgroup.com

www.recgroup.com