

Solar inverters
for Asia

Solar inverters
for Europe

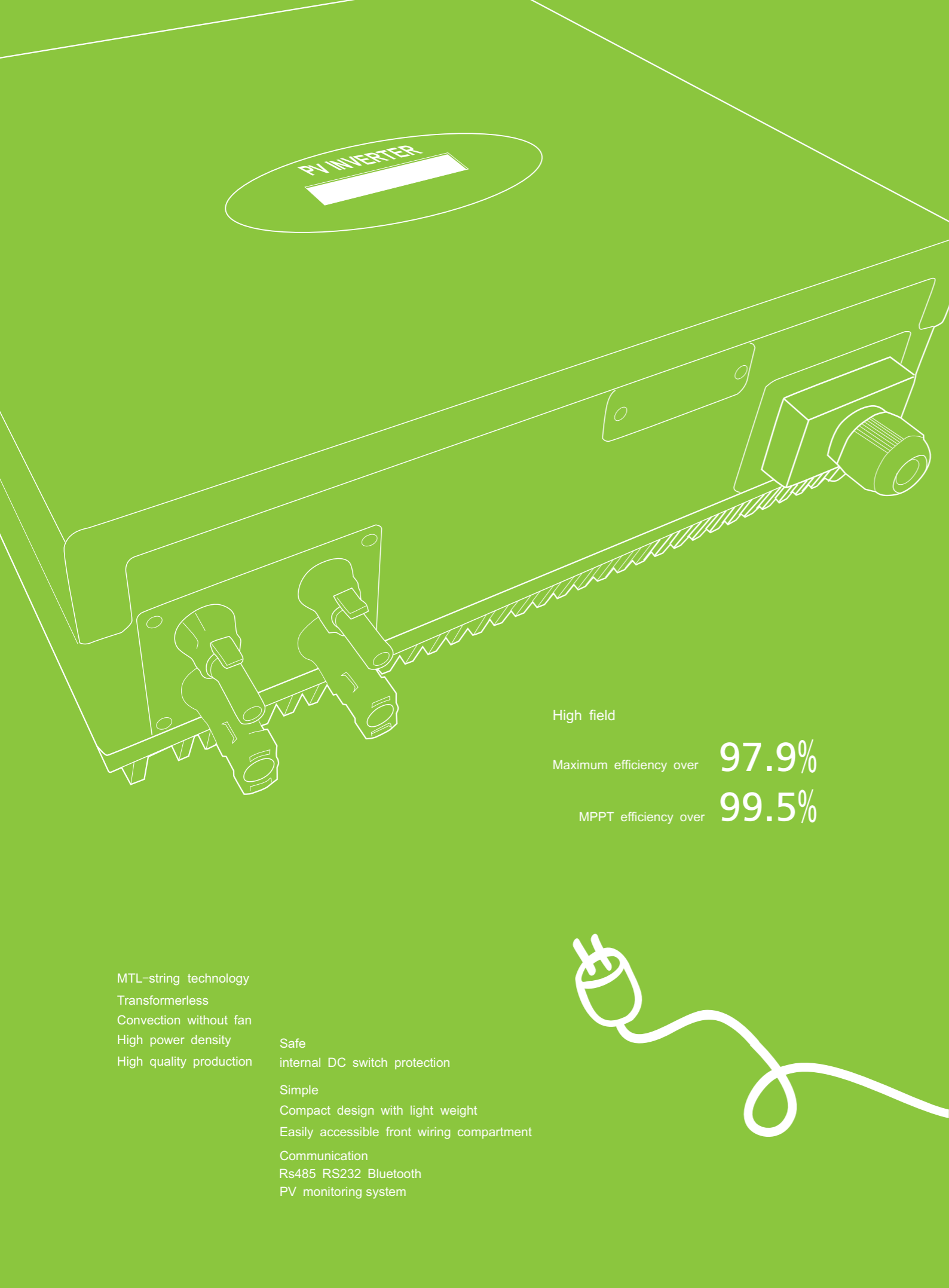
Solar inverters
for America

Solar inverters
for the Earth

Green Inverters from **Growatt** powering tomorrow

GROWATT NEW ENERGY CO., LTD
No.12 Building, Xicheng Industrial Zone
Bao'an District, Shenzhen, P. R.China

T + 86 755 2747 1900
F + 86 755 2749 1460
E info@ginverter.com
W www.ginverter.com



High field

Maximum efficiency over **97.9%**

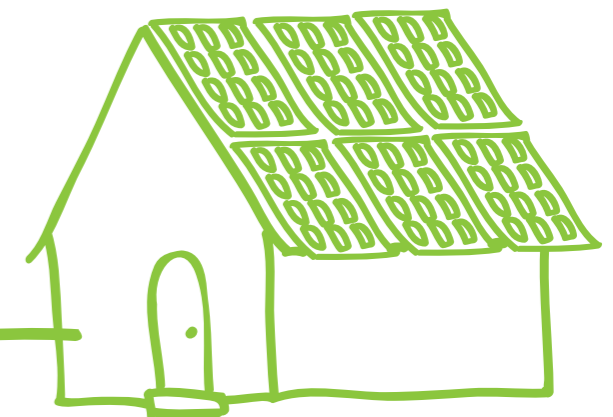
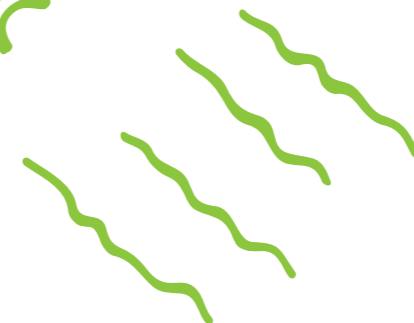
MPPT efficiency over **99.5%**

MTL-string technology
 Transformerless
 Convection without fan
 High power density
 High quality production

Safe
 internal DC switch protection

Simple
 Compact design with light weight
 Easily accessible front wiring compartment

Communication
 Rs485 RS232 Bluetooth
 PV monitoring system



GROWATT New Energy Co., Ltd is a vibrant solar company with the goal of delivering high-quality, competitively priced solar devices to make the green energy more affordable and accessible around the world. GROWATT develops, produces and sells leading international solar inverters for photovoltaic application.

As the most important component of photovoltaic system, inverter converts the direct current generated in photovoltaic cells into alternating current suitable for the grid, intelligently managing the PV system to monitor the solar array and grid. According to the key parameter of inverters, GROWATT has the converting efficiency up to 97.9%.

GROWATT is always driven by the technology and innovation, easily keeping pace with the trends of photovoltaic industry. We already have a series of first class inverters which meet the European industry and safety standards.

We invite trading company and system integrator to cooperate with us serving the global market. We also welcome the cooperation of ODM. In such a great potential market based on our sincere cooperation and the unique technology, our efforts will always lead to a prosperous future.

Based on our reliable technology and general warranty of 5 to 10 years, we also provide advanced technical support and post-sales service. Growatt is the one in your solar dream.

Growatt 1500TL / 2000TL / 3000TL / 4400TL / 5000TL

Leading - edge Technology

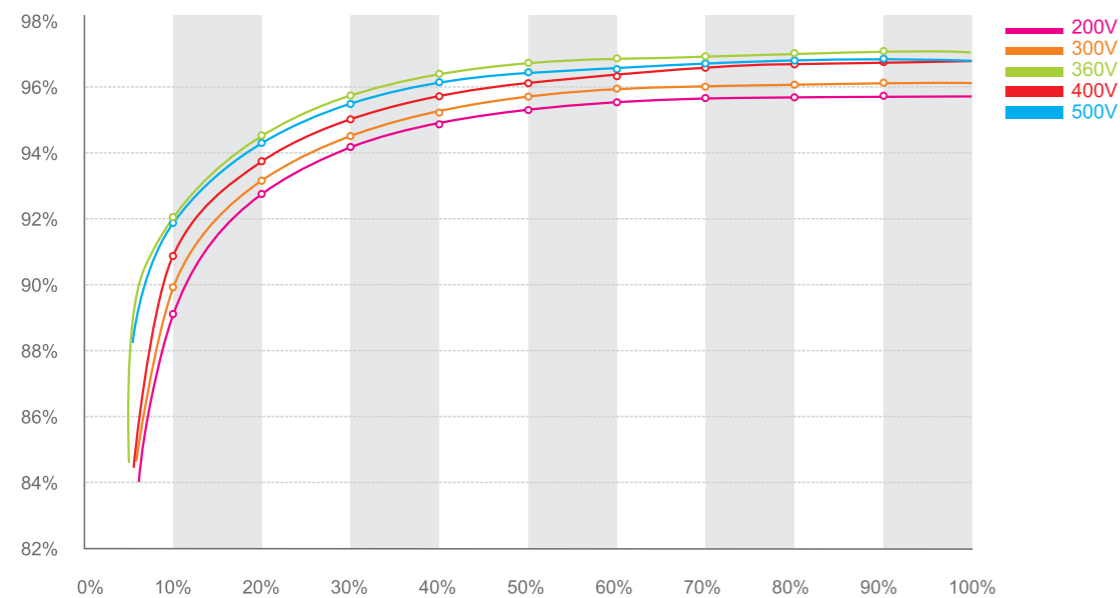
- ▶ Maximum efficiency of 97.8% and wide input voltage range
- ▶ Internal DC switch
- ▶ Transformerless H6 topology
- ▶ Compact design
- ▶ MTL - String
- ▶ Bluetooth technology
- ▶ Sound control
- ▶ Easy installation
- ▶ Comprehensive Growatt warranty program

Europe ENS

- ▶ Simple national setting of line supply monitoring(ENS)
- ▶ Easy country configuration
- ▶ Multi - language display
- ▶ Currently available for Germany, Austria, France, Switzerland, UK, Italy and Spain



3k efficiency



Datasheet

	Growatt 1500TL	Growatt 2000TL	Growatt 3000TL	Growatt 4400TL	Growatt 5000TL
Input Data					
Max. DC power	1800W	2300W	3150W	4600W	5200W
Max. DC voltage	450V	500V	500V	580V	580V
Full load Mpp-Voltage range	230V - 450V	210V - 450V	250V - 450V	280V - 500V	120V - 500V
PV voltage range MPPT	120V - 450V	120V - 450V	120V - 450V	120V - 500V	280V - 500V
Max. number of parallel strings	1	2	2	3	3
Number of MPP trackers	1	1	1	1	1
MPPT input current	0 - 10A	0 - 12A	0 - 15A	0 - 20A	0 - 20A
Max DC input Isc current	15A	15A	20A	27A	27A
Output (AC)					
Nominal AC output power	1600W	2000W	2850W	4200W	4600W
Max. AC power	1650W	2200W	3000W	4200W	5000W
Max. output current	8A	11A	13A	21A	23A
Nominal AC voltage range	220V-240V / 180V-280V	220V-240V / 180V-280V	220V-240V / 180V-280V	220V-240V / 180V-280V	220V-240V / 180V-280V
AC grid frequency range	50Hz, 60Hz ± 5Hz	50Hz, 60Hz ± 5Hz	50Hz, 60Hz ± 5Hz	50Hz, 60Hz ± 5Hz	50Hz, 60Hz ± 5Hz
Phase shift (cos φ)	1	1	1	1	1
THDI	<3%	<3%	<3%	<3%	<3%
AC connection	Single phase	Single phase	Single phase	Single phase	Single phase
Efficiency					
Max. efficiency	97%	97%	97%	97.8%	97.8%
Euro-eta	96%	96%	96.5%	97.4%	97.4%
MPPT efficiency	99.5%	99.5%	99.5%	99.5%	99.5%
Protection Devices					
DC reverse polarity protection	yes	yes	yes	yes	yes
AC short-circuit protection	yes	yes	yes	yes	yes
Ground fault monitoring	yes	yes	yes	yes	yes
Grid monitoring	yes	yes	yes	yes	yes
Integrated all-pole sensitive leakage current monitoring unit	yes	yes	yes	yes	yes
General Data					
Dimensions (W / D / H) in mm	362/329/132	362/329/132	362/329/132	406/406/192	406/406/192
Weight	11.5KG	11.7KG	12.2KG	21KG	21KG
Operating temperature range	-25 °C ... +60 °C	-25 °C ... +60 °C	-25 °C ... +60 °C	-25 °C ... +60 °C	-25 °C ... +60 °C
Noise emission (typical)	≤25 dB(A)	≤25 dB(A)	≤25 dB(A)	≤25 dB(A)	≤25 dB(A)
Consumption: operating (standby)/ night	< 5W / < 0.5 W	< 5W / < 0.5 W	< 5W / < 0.5 W	< 5W / < 0.5 W	< 5W / < 0.5 W
Topology	transformerless	transformerless	transformerless	transformerless	transformerless
Cooling concept	No fan	No fan	No fan	No fan	No fan
Installation: Indoors / Outdoors (IP65)	yes / yes	yes / yes	yes / yes	yes / yes	yes / yes
Altitude	Up to 2000m without power derating	Up to 2000m without power derating	Up to 2000m without power derating	Up to 2000m without power derating	Up to 2000m without power derating
Humidity	0 ~ 95%, no condensation	0 ~ 95%, no condensation	0 ~ 95%, no condensation	0 ~ 95%, no condensation	0 ~ 95%, no condensation
Features					
DC connection:(MC3/MC4/H4)	opt / opt / yes	opt / opt / yes	opt / opt / yes	opt / opt / yes	opt / opt / yes
AC connection: Terminals	yes	yes	yes	yes	yes
LCD display	yes	yes	yes	yes	yes
Interfaces: Bluetooth/RS485/RS232	opt / opt / yes	opt / opt / yes	opt / opt / yes	opt / opt / yes	opt / opt / yes
Warranty: 5 years / 10 years	yes / opt	yes / opt	yes / opt	yes / opt	yes / opt

Certificates and Approvals

CE / TUV,EN50178, VDE0126-1-1, EN6100-3-2
 EN6100-6-1, EN6100-6-2, EN6100-6-3, EN6100-6-4
 IEC-62109,DK5940,G83,RD1663

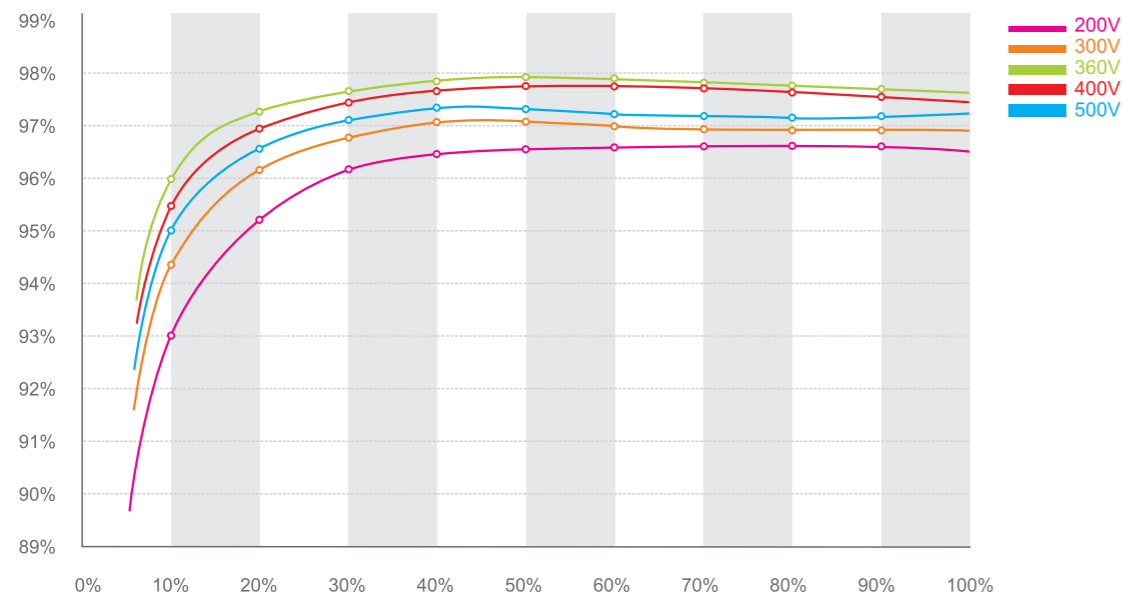
Sungold 1500TL / 2000TL / 3000TL / 4400TL / 5000TL

Leading - edge Technology

- ▶ Maximum efficiency of 97.8% and wide input voltage range
- ▶ Transformerless H6 topology
- ▶ Compact design
- ▶ MTL - String
- ▶ Bluetooth technology
- ▶ Sound control
- ▶ Easy installation
- ▶ Comprehensive Growatt warranty program



5k efficiency



Datasheet

	Sungold 1500TL	Sungold 2000TL	Sungold 3000TL	Sungold 4400TL	Sungold 5000TL
Input Data					
Max. DC power	1800W	2300W	3150W	4600W	5200W
Max. DC voltage	450V	500V	500V	580V	580V
Full load Mpp-Voltage range	230V - 450V	210V - 450V	250V - 450V	280V - 500V	120V - 500V
PV voltage range MPPT	120V - 450V	120V - 450V	120V - 450V	120V - 500V	280V - 500V
Max. number of parallel strings	1	2	2	3	3
Number of MPP trackers	1	1	1	1	1
MPPT input current	0 - 10A	0 - 12A	0 - 15A	0 - 20A	0 - 20A
Max DC input Isc current	15A	15A	20A	27A	27A
Output (AC)					
Nominal AC output power	1600W	2000W	2850W	4200W	4600W
Max. AC power	1650W	2200W	3000W	4200W	5000W
Max. output current	8A	11A	13A	21A	23A
Nominal AC voltage range	207V - 263V	207V - 263V	207V - 263V	207V - 263V	207V - 263V
AC grid frequency range	46Hz - 54Hz	46Hz - 54Hz	46Hz - 54Hz	46Hz - 54Hz	46Hz - 54Hz
Phase shift (cos φ)	1	1	1	1	1
THDI	<3%	<3%	<3%	<3%	<3%
AC connection	Single phase	Single phase	Single phase	Single phase	Single phase
Efficiency					
Max. efficiency	97%	97%	97%	97.8%	97.8%
Euro-eta	96%	96%	96.5%	97.4%	97.4%
MPPT efficiency	99.5%	99.5%	99.5%	99.5%	99.5%
Protection Devices					
DC reverse polarity protection	yes	yes	yes	yes	yes
AC short-circuit protection	yes	yes	yes	yes	yes
Ground fault monitoring	yes	yes	yes	yes	yes
Grid monitoring	yes	yes	yes	yes	yes
Integrated all-pole sensitive leakage current monitoring unit	yes	yes	yes	yes	yes
General Data					
Dimensions (W / D / H) in mm	362/329/132	362/329/132	362/329/132	406/406/192	406/406/192
Weight	11.5KG	11.7KG	12.2KG	21KG	21KG
Operating temperature range	-25 °C ... +60 °C	-25 °C ... +60 °C	-25 °C ... +60 °C	-25 °C ... +60 °C	-25 °C ... +60 °C
Noise emission (typical)	≤25 dB(A)	≤25 dB(A)	≤25 dB(A)	≤25 dB(A)	≤25 dB(A)
Consumption: operating (standby)/ night	< 5W / < 0.5 W	< 5W / < 0.5 W	< 5W / < 0.5 W	< 5W / < 0.5 W	< 5W / < 0.5 W
Topology	transformerless	transformerless	transformerless	transformerless	transformerless
Cooling concept	No fan	No fan	No fan	No fan	No fan
Installation: Indoors / Outdoors (IP65)	yes / yes	yes / yes	yes / yes	yes / yes	yes / yes
Altitude	Up to 2000m without power derating	Up to 2000m without power derating	Up to 2000m without power derating	Up to 2000m without power derating	Up to 2000m without power derating
Humidity	0 ~ 95%, no condensation	0 ~ 95%, no condensation	0 ~ 95%, no condensation	0 ~ 95%, no condensation	0 ~ 95%, no condensation
Features					
DC connection:(MC3/MC4/H4)	opt / opt / yes	opt / opt / yes	opt / opt / yes	opt / opt / yes	opt / opt / yes
AC connection: Terminals	yes	yes	yes	yes	yes
LCD display	yes	yes	yes	yes	yes
Interfaces: Bluetooth/RS485/RS232	opt / opt / yes	opt / opt / yes	opt / opt / yes	opt / opt / yes	opt / opt / yes
Warranty: 5 years / 10 years	yes / opt	yes / opt	yes / opt	yes / opt	yes / opt

Certificates and Approvals

AS4777, AS/NZS 3100

Growatt 3600MTL / 4200MTL / 5000MTL

Leading - edge Technology

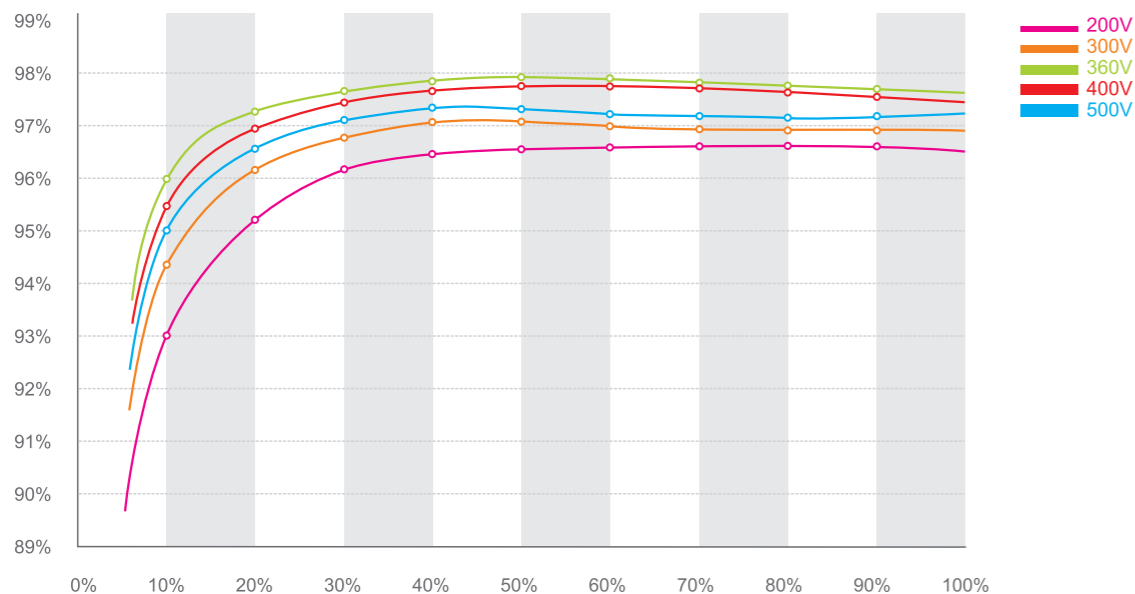
- ▶ Maximum efficiency of 97.9% and wide input voltage range
- ▶ Internal DC switch
- ▶ Transformerless H6 topology
- ▶ Compact design
- ▶ Multi MPP controller
- ▶ MTL - String
- ▶ Bluetooth technology
- ▶ Sound control
- ▶ Easy installation

Europe / Australia ENS

- ▶ Simple national setting of line supply monitoring(ENS)
- ▶ Easy country configuration
- ▶ Multi - language display
- ▶ Currently available for Germany, Austria, France, UK, Austria, Switzerland, Italy and Spain



5k efficiency



Datasheet

	Growatt 3600MTL	Growatt 4200MTL	Growatt 5000MTL
Input Data			
Max. DC power	3800W	4400W	5200W
Max. DC voltage	600V	600V	600V
PV voltage range MPPT	120V - 550V	120V - 550V	120V - 550V
Max. number of parallel strings	2/2	2/2	2/2
Number of MPP trackers	2(can parallel)	2(can parallel)	2(can parallel)
Max. DC power each MPPT	2000W	2500W	3000W
Max. input current of each MPP tracker	10A / 10A	15A / 15A	15A / 15A
Output (AC)			
Nominal AC output power	3600W	4200W	4600W/5000W *
Max. output current	15.6A	18.5A	20A
Nominal AC voltage range	220V/230V/240V 180V - 280V	220V/230V/240V 180V - 280V	220V/230V/240V 180V - 280V
AC grid frequency range	50Hz, 60Hz /± 5Hz	50Hz, 60Hz /± 5Hz	50Hz, 60Hz /± 5Hz
Phase shift (cos φ)	1	1	1
THDI	<3%	<3%	<3%
AC connection	Single phase	Single phase	Single phase
Efficiency			
Max. efficiency	97.6%	97.9%	97.9%
Euro-eta	97%	97.4%	97.4%
MPPT efficiency	99.5%	99.5%	99.5%
Protection Devices			
DC reverse polarity protection	yes	yes	yes
AC short-circuit protection	yes	yes	yes
Ground fault monitoring	yes	yes	yes
Grid monitoring	yes	yes	yes
Integrated all-pole sensitive leakage current monitoring unit	yes	yes	yes
General Data			
Dimensions (W / D / H) in mm	360/510/188	360/510/188	360/510/188
Weight	24KG	24KG	24KG
Operating temperature range	-25 °C ... +60 °C	-25 °C ... +60 °C	-25 °C ... +60 °C
Noise emission (typical)	≤25 dB(A)	≤25 dB(A)	≤25 dB(A)
Consumption: operating (standby)/ night	< 5W / < 0.5 W	< 5W / < 0.5 W	< 5W / < 0.5 W
Topology	transformerless	transformerless	transformerless
Cooling concept	No fan	No fan	No fan
Installation: Indoors / Outdoors (IP65)	yes / yes	yes / yes	yes / yes
Altitude	Up to 2000m without power derating	Up to 2000m without power derating	Up to 2000m without power derating
Humidity	0 ~ 95%, no condensation	0 ~ 95%, no condensation	0 ~ 95%, no condensation
Features			
DC connection:(MC3/MC4/H4)	opt / opt / yes	opt / opt / yes	opt / opt / yes
AC connection: Terminals	yes	yes	yes
LCD display	yes	yes	yes
Interfaces: Bluetooth/RS485/RS232	opt / opt / yes	opt / opt / yes	opt / opt / yes
Warranty: 5 years / 10 years	yes / opt	yes / opt	yes / opt
Certificates and Approvals			
VDE0126-1-1, IEC62109,RD1663,G83 EN6100-6-1, EN6100-6-2, EN6100-6-3, EN6100-6-4 AS4777,AS/NZS3100			

* Optionally provide 5000W

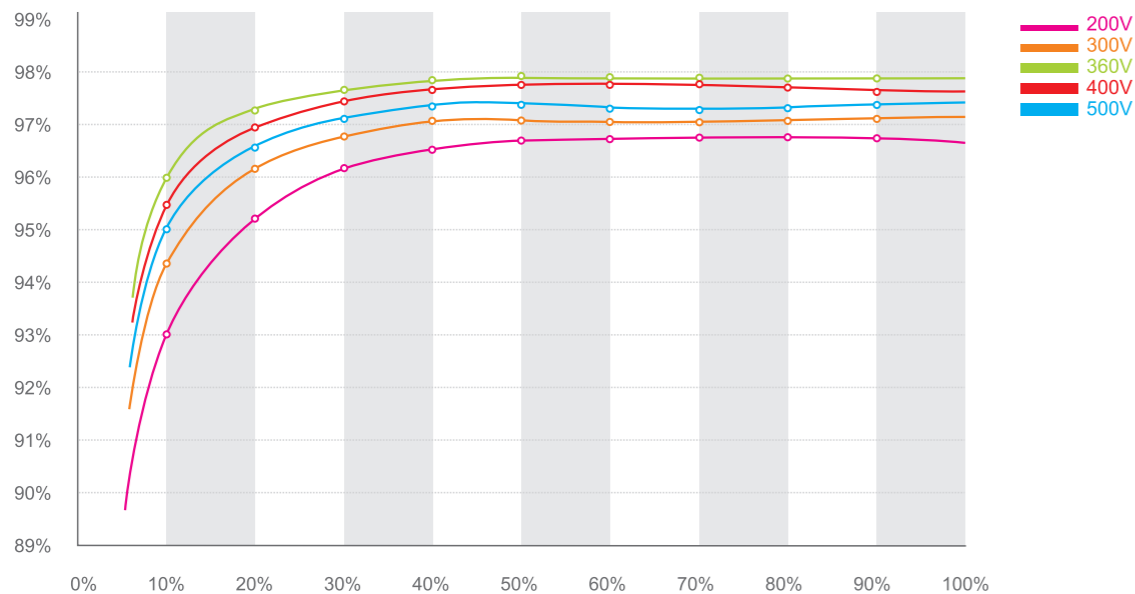
Growatt 3600MTL-US / 4200MTL-US / 5000MTL-US

Leading - edge Technology

- ▶ Maximum efficiency of 97.9% and wide input voltage range
- ▶ Internal DC switch
- ▶ Transformerless H6 topology
- ▶ Compact design
- ▶ Multi MPP controller
- ▶ MTL - String
- ▶ Bluetooth technology
- ▶ Sound control
- ▶ Easy installation



5k efficiency



Datasheet

	Growatt 3600MTL-US	Growatt 4200MTL-US	Growatt 5000MTL-US
Input Data			
Max. DC power	3800W	4400W	5200W
Max. DC voltage	600V	600V	600V
PV voltage range MPPT	120V - 550V	120V - 550V	120V - 550V
Max. number of parallel strings	2/2	2/2	2/2
Number of MPP trackers	2(can parallel)	2(can parallel)	2(can parallel)
Max DC power on each MPP tracker	2000W	2500W	3000W
Max. input current of each MPP tracker	10A / 10A	15A / 15A	15A / 15A
Output (AC)			
Nominal AC output power	3600W	4200W	4600W/5000W *
Nominal AC grid frequency	60Hz	60Hz	60Hz
AC grid frequency range	59.3 - 60.5Hz	59.3 - 60.5Hz	59.3 - 60.5Hz
Nominal output current	17.4A / 15A / 13A	20.2A / 17.5A / 15A	22A / 19A / 16.7A
Max. output current	18A / 17.1A / 14.8A	21A / 20A / 17.2A	23A / 21.8A / 18.8A
Phase shift (cos φ)	1	1	1
THDI	<3%	<3%	<3%
Phase conductors / connection phase	1/2	1/2	1/2
Nominal AC voltage range	Default:240V Split phase optional:208,240 or 277 single phase		
AC voltage range	183 - 228V@208V	211 - 264V@240V	244 - 305V@277V
Efficiency			
Max. efficiency	97.6%	97.9%	97.9%
Euro-eta	97%	97.4%	97.4%
MPPT efficiency	99.5%	99.5%	99.5%
Protection Devices			
DC reverse polarity protection	yes	yes	yes
AC short-circuit protection	yes	yes	yes
Ground fault monitoring	yes	yes	yes
Grid monitoring	yes	yes	yes
Integrated all-pole sensitive leakage current monitoring unit	yes	yes	yes
General Data			
Dimensions (W / D / H) in mm	360/510/188	360/510/188	360/510/188
Weight	24KG	24KG	24KG
Operating temperature range	-25 °C ... +60 °C	-25 °C ... +60 °C	-25 °C ... +60 °C
Noise emission (typical)	≤25 dB(A)	≤25 dB(A)	≤25 dB(A)
Consumption: operating (standby)/ night	< 5W / < 0.5 W	< 5W / < 0.5 W	< 5W / < 0.5 W
Topology	transformerless	transformerless	transformerless
Cooling concept	No fan	No fan	No fan
Installation: Indoors / Outdoors (IP65/NEMA 4R)	yes / yes	yes / yes	yes / yes
Altitude	Up to 2000m without power derating	Up to 2000m without power derating	Up to 2000m without power derating
Humidity	0 ~ 95%, no condensation	0 ~ 95%, no condensation	0 ~ 95%, no condensation
Features			
DC connection:(MC3/MC4/H4)	opt / opt / yes	opt / opt / yes	opt / opt / yes
AC connection: Terminals	yes	yes	yes
LCD display	yes	yes	yes
Interfaces: Bluetooth/RS485/RS232	opt / opt / yes	opt / opt / yes	opt / opt / yes
Warranty: 5 years / 10 years	yes / opt	yes / opt	yes / opt
Certificates and Approvals			
UI1741,UL1998,IEEE1547,CSA C22.2 No.107.1,FCC Part15(Class A&B)			

* Optionally provide 5000W

Growatt 10000UE / 12000UE / 18000UE / 20000UE

Leading - edge Technology

- ▶ DC input voltage of up to 1000V
- ▶ Maximum efficiency of 98%
- ▶ Internal DC switch
- ▶ Transformerless
- ▶ Compact design
- ▶ Multi MPP controller
- ▶ MTL - String
- ▶ Bluetooth technology
- ▶ Sound control
- ▶ Easy installation
- ▶ Comprehensive Growatt warranty program

Europe / Australia ENS

- ▶ Simple national setting of line supply monitoring(ENS)
- ▶ Easy country configuration
- ▶ Multi - language display
- ▶ Currently available for Germany, Austria, France, UK, Switzerland, Italy and Spain



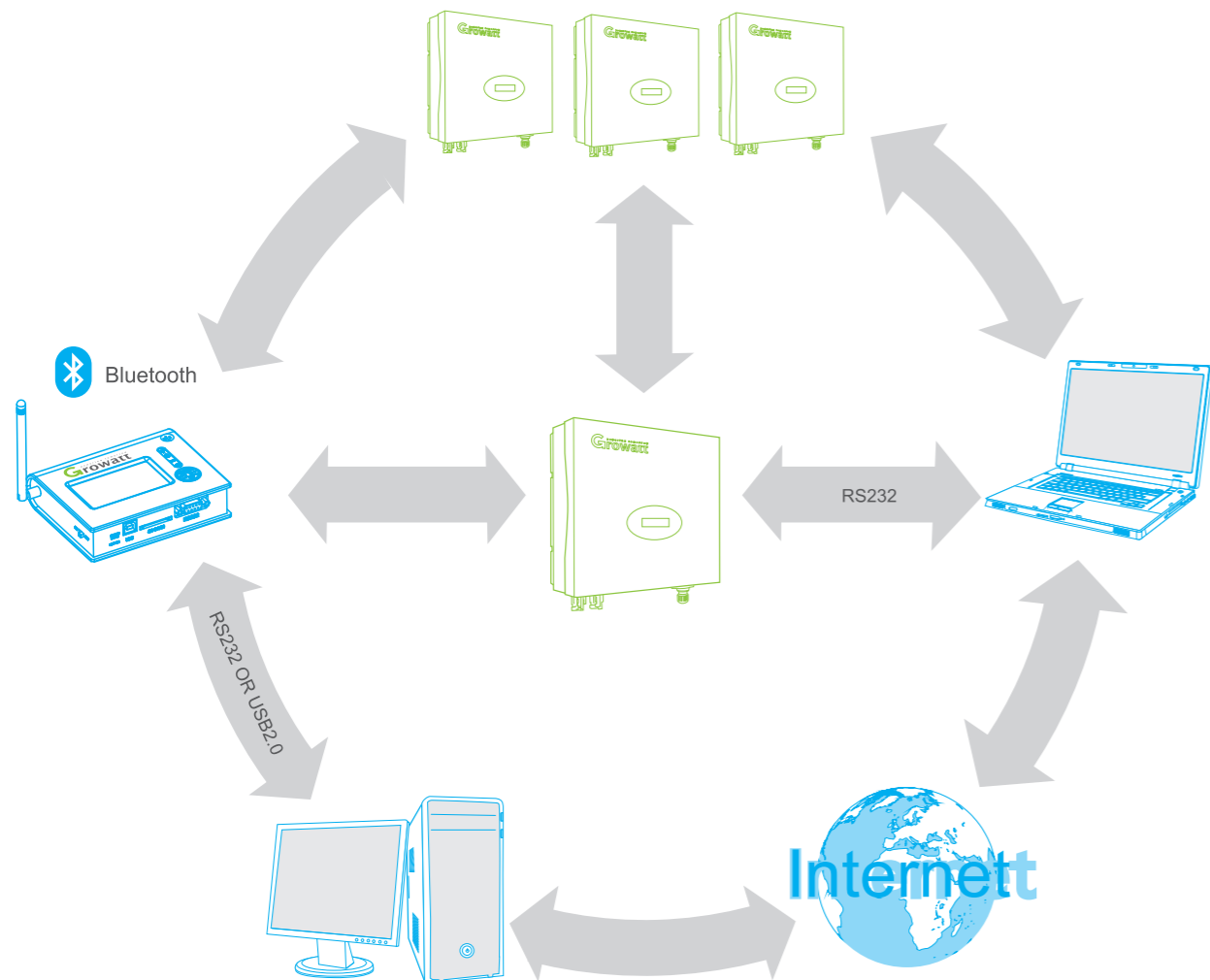
Datasheet

	Growatt 10000UE	Growatt 12000UE	Growatt 18000UE	Growatt 20000UE
Input Data				
Max. DC power	10200W	12250W	18400W	20000W
Max DC voltage	1000V	1000V	1000V	1000V
PV voltage range MPPT	400V-800V	400V-800V	400V-800V	400V-800V
Max input current(input A / input B)	15A / 15A	17A / 17A	23A / 23A	25A / 25A
Number of MPP trackers	2	2	2	2
Max number of parallel strings(input A / input B)	2/2	2/2	3/3	3/3
DC Connections	MC4(optional MC3)	MC4(optional MC3)	MC4(optional MC3)	MC4(optional MC3)
Output (AC)				
Nominal output power	10KW	12KW	18KW	19.5KW
Max. AC power	10KVA	12KVA	18KVA	19.5KVA
Max. output current (overload 110%)	16A	19A	29A	32A
Nominal AC voltage range	3/N/PE 230V/400V	3/N/PE 230V/400V	3/N/PE 230V/400V	3/N/PE 230V/400V
AC grid frequency range	50/60Hz -6Hz/ ± 5Hz	50/60Hz -6Hz/ ± 5Hz	50/60Hz -6Hz/ ± 5Hz	50/60Hz -6Hz/ ± 5Hz
Phase shift (cos φ) adjustable	0.8 leading -0.8laging	0.8 leading -0.8laging	0.8 leading -0.8laging	0.8 leading -0.8laging
Ac output THD	<3%(nominal power output)	<3%(nominal power output)	<3%(nominal power output)	<3%(nominal power output)
AC connection	Three phase	Three phase	Three phase	Three phase
Consumption(night)	<1W	<1W	<1W	<1W
Electronics string fuse	20A	25A	30A	40A
Ground failure detection	yes	yes	yes	yes
Efficiency				
Max. efficiency	98%	98%	98%	98%
Euro efficiency	97.5%	97.5%	97.5%	97.5%
General Data				
Weight	40KG	40KG	55KG	55KG
Isolation	transformerless	transformerless	transformerless	transformerless
Ambient operational range	-25 °C ... +60 °C	-25 °C ... +60 °C	-25 °C ... +60 °C	-25 °C ... +60 °C
Cooling concept	Fans	Fans	Fans	Fans
Installation indoors/ outdoors(IP 65)	yes / yes	yes / yes	yes / yes	yes / yes
Altitude	Up to 2000m without power derating	Up to 2000m without power derating	Up to 2000m without power derating	Up to 2000m without power derating
Humidity	0 ~ 95%, no condensation	0 ~ 95%, no condensation	0 ~ 95%, no condensation	0 ~ 95%, no condensation
Interfaces: Bluetooth/RS485/RS232	opt / opt / yes	opt / opt / yes	opt / opt / yes	opt / opt / yes
Display	YES (Alphanumeric 4 lines)	YES (Alphanumeric 4 lines)	YES (Alphanumeric 4 lines)	YES (Alphanumeric 4 lines)
Warranty:5 years / 10 years	yes / opt	yes / opt	yes / opt	yes / opt
Certificates and Approvals				
	TUV,UL,AS	TUV,UL,AS	TUV,UL,AS	TUV,UL,AS

Shine Logger Features

Features

- ▶ Monitoring inverters via bluetooth link. Recording the total yield, on line power, PV panel voltage, PV panel current.
- ▶ Active alarm management with RS232. An additional Buzzer function.
- ▶ 2GigBytes SD Card storage. Datalogger can work off line.
- ▶ Data records transfered from SD Card to PC via USB2.0 cable.
- ▶ Charger via USB2.0 cable or DC-DC adapter.
- ▶ Easy Control provides an extremely flexible interface to facilitate PC-based inverter monitoring.
- ▶ A front-mounted LCD display provides visual confirmation of all critical operating parameters.



Datasheet

Communication Specification

Communication with Inverters	Bluetooth (Class 1Spec.) or RS485
Communication with PC	RS232 or USB 2.0
Monitor number	4

HMI (Human Machine Interface)

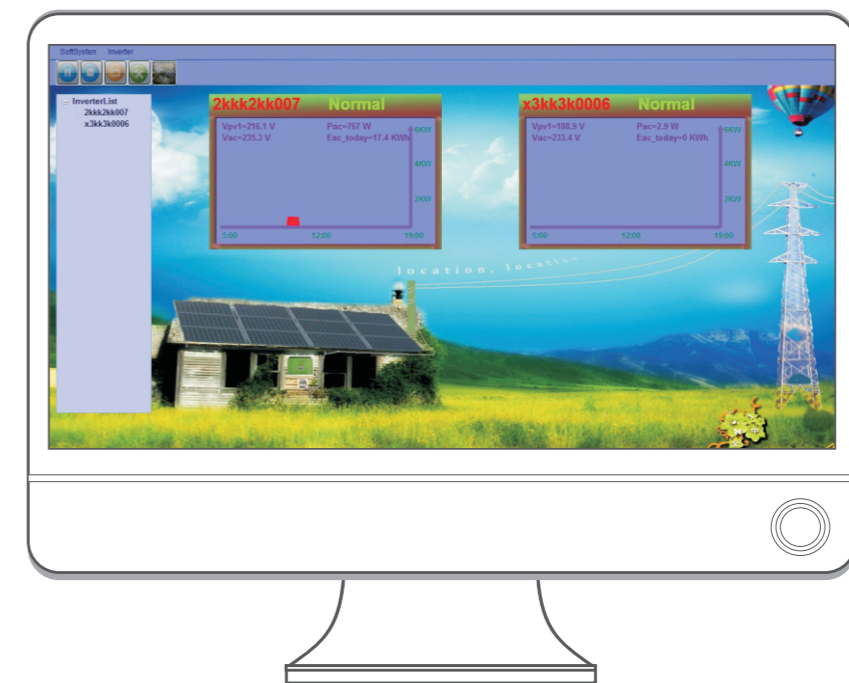
LCD Screen	128×64 Dot Graph LCD
Keypad	4bit Keypad (Prv., Next, Enter, Esc)
Alarm	Buzzer
LED	Battery Managemet
Storage	2G SD Card

Power Supply

Power supply	Adapter / USB cable / Lithium Battery
Battery type	3000mAh Lithium Battery
Power consumption	< 2W

General Data

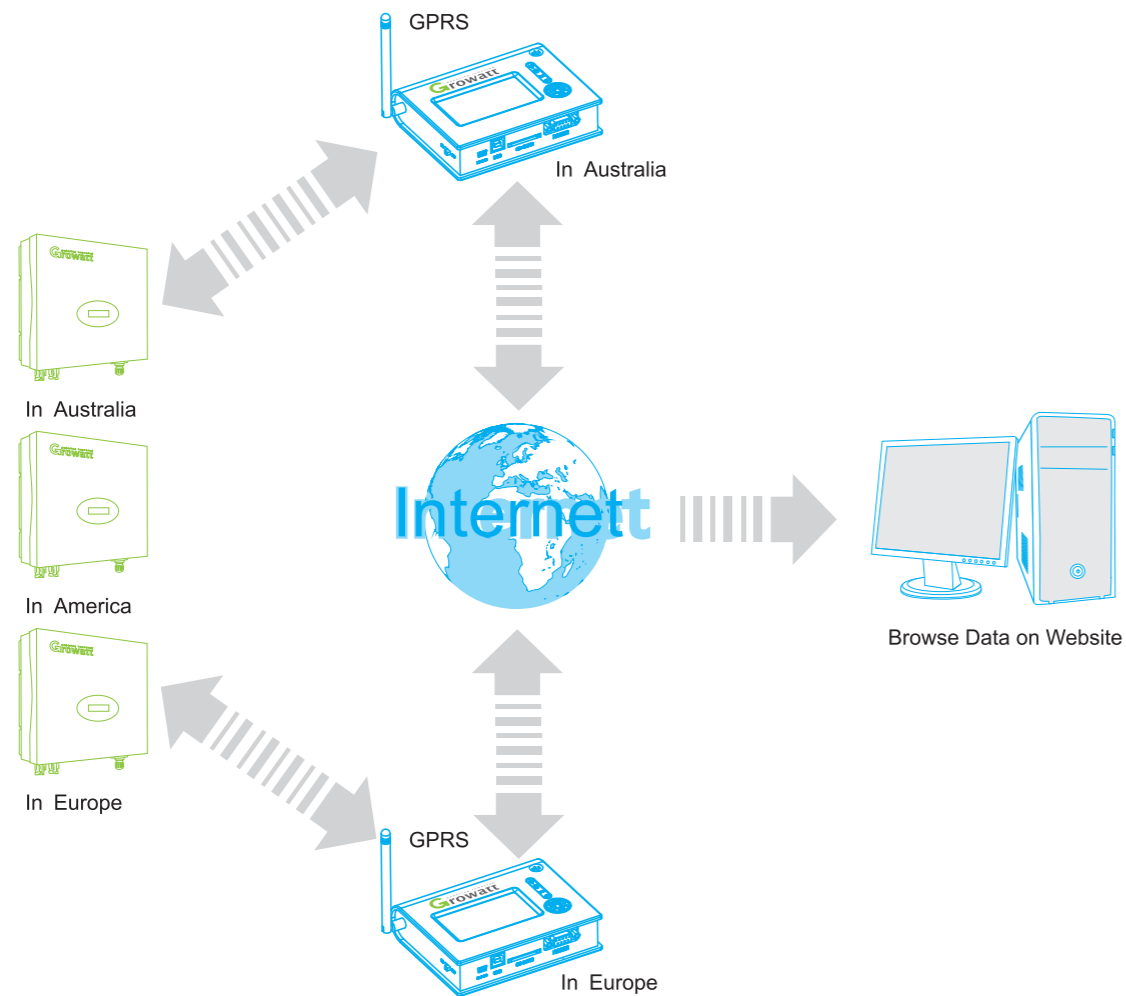
Dimension	198 / 126 / 48 mm
Weight	950g
Installation	Desktop Device
Working temperature range	0~ +45°C
Environment protection level	IP20



Global GPRS Monitoring System

System Features

- ▶ Monitoring inverter's running status via GPRS connection uninterrupted.
- ▶ Record inverter running data: PV/AC voltage, PV/AC current, PV/AC power, AC frequency, energy today energy all, etc.
- ▶ Monitor data storage in redundancy database with high security.
- ▶ Browse recording data on the website, in anywhere you can get access to the Internet
- ▶ Easy installation. Optional connection port of RS232 or RS485.
- ▶ Three LED indicators help you confirm the connection of GPRS, PS232/485 connection and power supply.



Datasheet

Communication Specification

Communication with Inverters	RS485 or RS232
Data browse interface	In Internet
Monitor number	8 via RS485, 1 via RS232

HMI (Human Machine Interface)

LED	GPRS, RS485/RS232, Power Indicator
-----	------------------------------------

Power Supply

Power supply	Adapter DC8~12V
Power consumption	< 1W

General Data

Delivery method	GPRS
Dimension	115 / 110 / 56 mm
Installation	Table top or wall-mounting
Operation temperature	-10~ 55℃(14 ~ 131 ℉)
Environment protection level	IP20



Service hotline:
+86 755 2747 1942
Email: service@ginverter.com

Business hotline
+86 755 2747 1900
Email: sales@ginverter.com

Choose Growatt
Choose golden service
7 x 24 global on line support

Consultation

Growatt provides the consultation: production, system design, installing and debugging.

Integrator service

Growatt cooperates with the system integrator to design the best solar system.

On site support

Growatt engineers will be on site with our partner to solve any urgent case.

Guarantee

Growatt provides 5years free warranty and 10years option warranty.

Training

Growatt provides the total free training.



Share the sun
Share the green energy