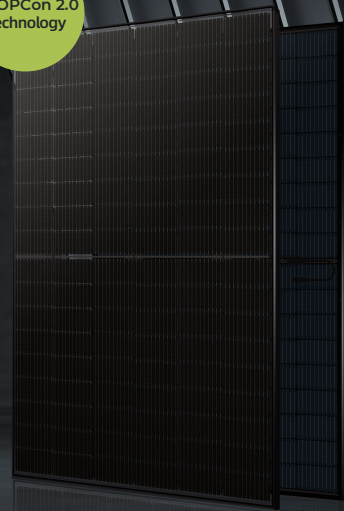


# JW-HD108N

N-type Bifacial Mono Black Module

## 400-420W

J-TOPCon 2.0 Technology



<b>420W</b> Maximum Power Output	<b>21.51%</b> Maximum Module Efficiency	<b>0~+5W</b> Power Output Tolerance
-------------------------------------	--	--

IEC61215(2016), IEC61730(2016) | ISO9001:2015: Quality Management System | ISO14001:2015: Environment Management System  
ISO45001:2018: Occupational health and safety management systems | IEC62941: 2019: Quality system for PV module manufacturing



**10-30% Additional Power Generation**  
30 years lifespan brings 10-30% additional power generation comparing with conventional P-type module



**Better Weak Illumination Response**  
Higher power output even under low-light environments like on cloudy or foggy days



**ZERO LID (Light Induced Degradation)**  
N-type solar cell has no LID naturally which can increase power generation



**Better Temperature Coefficient**  
Higher power generation under working conditions, thanks to passivating contact cell technology



**Higher Reliability**  
Adpoted Jolywood lastest J-TOPCon2.0 technology, No polysilicon wrap around, Full electrical isolation, Zero leakage current; Much Safer for roof

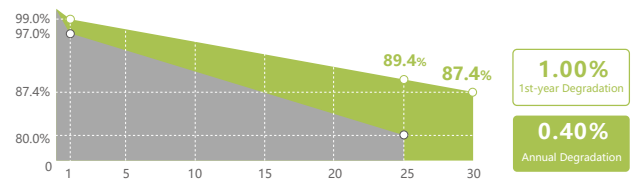


**Outstanding visual appearance**  
Designed with aesthetics in mind, thinner wires that appear all black at a distance

### Jolywood Delivers Reliable Performance Over Time

- Leader of N-type bifacial manufacturer
- Full-automatic facility and industry-leading technology
- Best-in-class durability and reliability
- BNEF Tier One

### Linear Performance Warranty



25 Years Product Material & Workmanship / 30 Years Linear Performance Warranty

Standard Module Linear Performance Warranty | Jolywood N-type Bifacial Double Glass Module Linear Performance Warranty

\*Subject to the terms and conditions contained in the applicable Jolywood Solar Limited Warranty Statement. Also this 25-year limited product warranty is available only for products installed and operating on residential rooftops in certain regions.

