

# TR Bifacial 550-570 Watt

Tiling Ribbon (TR) Technology

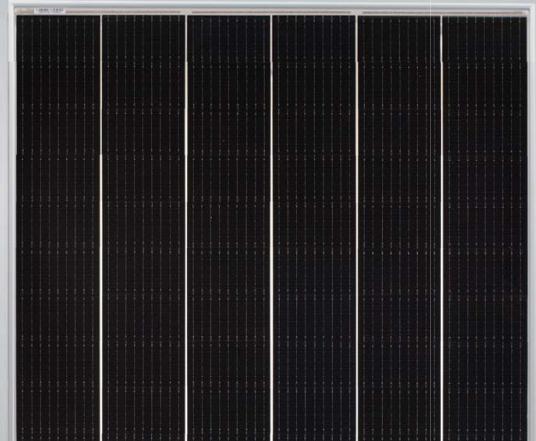
Positive power tolerance of 0~+3%

ISO9001:2015, ISO14001:2015, ISO45001:2018  
certified factory

IEC61215, IEC61730 certified product

(Draft)

## TIGER Pro



### KEY FEATURES



#### TR technology + Half Cell

TR technology with Half cell aims to eliminate the cell gap to increase module efficiency (bi-facial up to 21.30%)



#### MBB instead of 5BB

MBB technology decreases the distance between bus bars and finger grid line which is benefit to power increase.



#### Higher lifetime Power Yield

2% first year degradation,  
0.45% linear degradation



#### Best Warranty

12 year product warranty,  
30 year linear power warranty



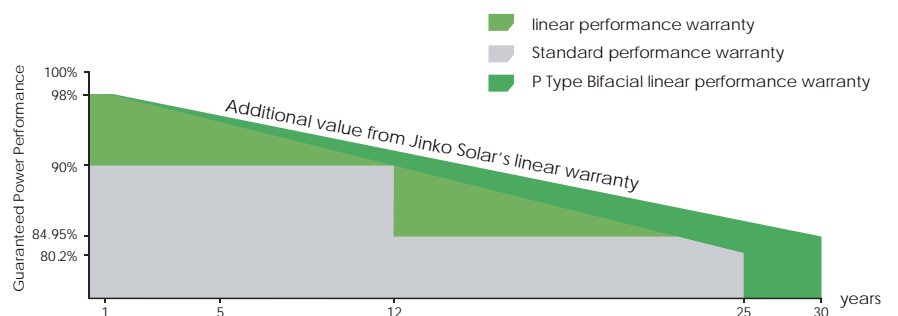
#### Strengthened Mechanical Support

5400 Pa snow load, 2400 Pa wind load

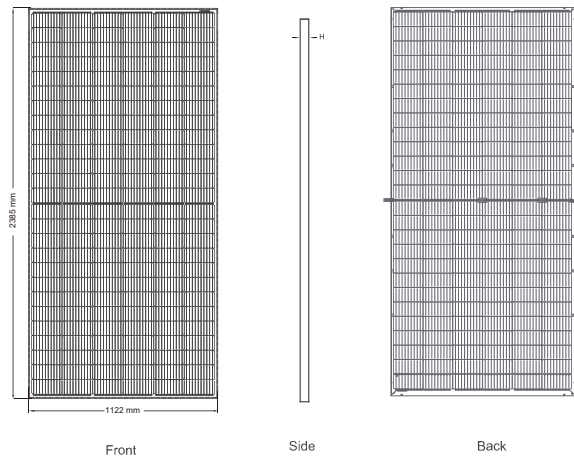


### LINEAR PERFORMANCE WARRANTY

12 Year Product Warranty • 30 Year Linear Power Warranty  
0.45% Annual Degradation Over 30 years



## Engineering Drawings



Front

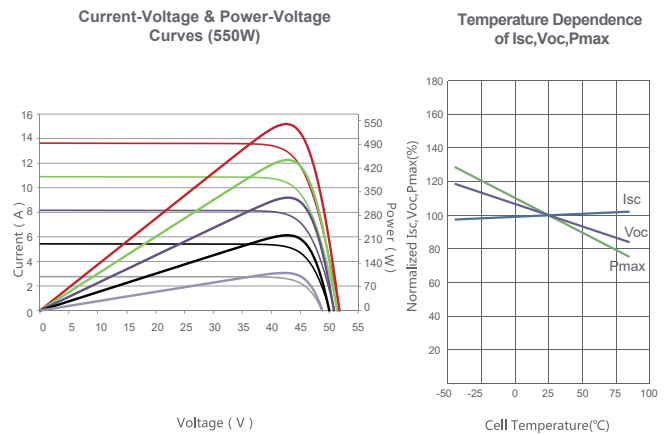
Side

Back



Length: ±2mm  
Width: ±2mm  
Height: ±1mm  
Row Pitch: ±2mm

## Electrical Performance & Temperature Dependence



## Mechanical Characteristics

Cell Type	P type Mono-crystalline
No. of cells	156 (2×78)
Dimensions	2385×1122×35mm (93.90×44.17×1.38 inch)
Weight	30.3 kg (66.8 lbs)
Front Glass	3.2mm, Anti-Reflection Coating, High Transmission, Low Iron, Tempered Glass
Frame	Anodized Aluminium Alloy
Junction Box	IP67 Rated
Output Cables	TUV 1×4.0mm <sup>2</sup> (+): 290mm, (-): 145mm or Customized Length

## Packaging Configuration

(Two pallets = One stack)

31pcs/pallets, 62pcs/stack, 496pcs/ 40'HQ Container

## SPECIFICATIONS

Module Type	JKM550M-7RL4-TV		JKM555M-7RL4-TV		JKM560M-7RL4-TV		JKM565M-7RL4-TV		JKM570M-7RL4-TV	
	STC	NOCT	STC	NOCT	STC	NOCT	STC	NOCT	STC	NOCT
Maximum Power (Pmax)	550Wp	409Wp	555Wp	413Wp	560Wp	417Wp	565Wp	420Wp	570Wp	424Wp
Maximum Power Voltage (Vmp)	44.22V	40.72V	44.33V	40.88V	44.42V	40.97V	44.49V	41.05V	44.60V	41.17V
Maximum Power Current (Imp)	12.44A	10.05A	12.52A	10.10A	12.61V	10.17A	12.70A	10.24A	12.78V	10.30A
Open-circuit Voltage (Voc)	52.70V	49.74V	52.80V	49.84V	52.90V	49.93V	53.00V	50.03V	53.10V	50.12V
Short-circuit Current (Isc)	13.24A	10.69A	13.33A	10.77A	13.42A	10.84A	13.51A	10.91A	13.60A	10.98A
Module Efficiency STC (%)	20.55%		20.74%		20.93%		21.11%		21.30%	
Operating Temperature(°C)	-40°C~+85°C									
Maximum system voltage	1500VDC (IEC)									
Maximum series fuse rating	25A									
Power tolerance	0~+3%									
Temperature coefficients of Pmax	-0.35%/°C									
Temperature coefficients of Voc	-0.28%/°C									
Temperature coefficients of Isc	0.048%/°C									
Nominal operating cell temperature (NOCT)	45±2°C									
Refer. Bifacial Factor	70±5%									

## BIFACIAL OUTPUT-REAR SIDE POWER GAIN

		572Wp	578Wp	583Wp	588Wp	593Wp
5%	Maximum Power (Pmax)	572Wp	578Wp	583Wp	588Wp	593Wp
	Module Efficiency STC (%)	23.12%	23.33%	23.54%	23.76%	23.97%
15%	Maximum Power (Pmax)	627Wp	633Wp	638Wp	644Wp	650Wp
	Module Efficiency STC (%)	23.42%	23.64%	23.85%	24.07%	24.28%
25%	Maximum Power (Pmax)	681Wp	688Wp	694Wp	700Wp	706Wp
	Module Efficiency STC (%)	25.46%	25.69%	25.93%	26.16%	26.39%

\* STC: Irradiance 1000W/m<sup>2</sup> Cell Temperature 25°C

AM=1.5

NOCT: Irradiance 800W/m<sup>2</sup> Ambient Temperature 20°C

AM=1.5

Wind Speed 1m/s

\* Power measurement tolerance: ± 3%