

SERAPHIM MODULE

245W

6PB SERIES

High Performance
Solar Modules

DuraFlex™



6PB

Electrical Characteristics

	SRP-235-6PB	SRP-240-6PB	SRP-245-6PB	SRP-250-6PB	Unit
Rated Power at STC (Pmp)	235	240	245	250	W
Power Tolerance	(0,+4.99)	(0,+4.99)	(0,+4.99)	(0,+4.99)	W
Power Maximum at STC	239.99	244.99	249.99	254.99	W
Cell Efficiency (η_c)	16.6~16.9	17.0~17.3	17.3~17.6	17.7~18.0	%
Minmum Module Efficiency (η_m)	14.4~14.7	14.7~15.0	15.0~15.4	15.4~15.7	%
Open Circuit Voltage (Voc)	36.7	36.9	37.0	37.1	V
Short Circuit Current (Isc)	8.48	8.60	8.76	8.92	A
Maximum Power Voltage (Vmp)	29.6	29.8	29.9	29.9	V
Maximum Power Current (Imp)	7.94	8.05	8.21	8.35	A
Maximum System Voltage	1000 (TUV), 600 (UL)				V
Maximum Series Fuse Rating	15				A

STC: Irradiance 1000 W/m², module temperature 25°C, AM=1.5;
Power measurement tolerance: +/-3%

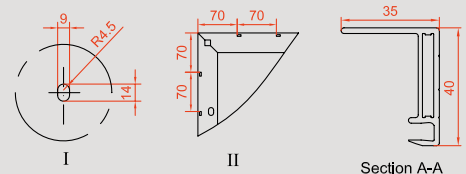
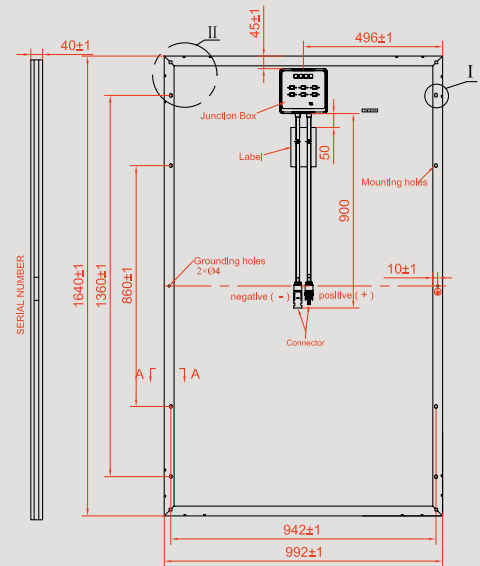
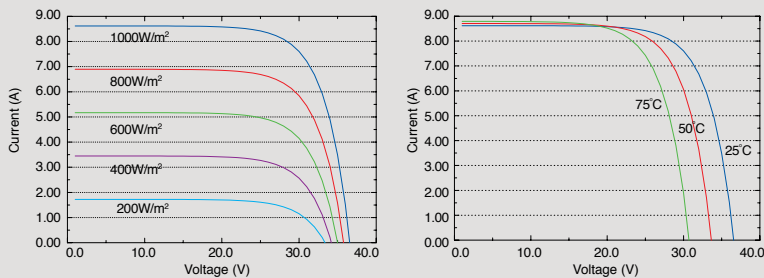
Temperature Characteristics

Pmax Temperature Coefficient	-0.42 %/°C
Voc Temperature Coefficient	-0.32 %/°C
Isc Temperature Coefficient	+0.04 %/°C
Operating Temperature	-40~+85 °C
Nominal Operating Cell Temperature (NOCT)	45±2 °C

Packing Configuration

Container	20'GP	40'GP	40'HC
Pieces per pallet	26	26	N.A
Pallets per container	12	28	N.A
Pieces per container	312	728	N.A

Current-Voltage & Power-Voltage Curve (SRP-240-6PB)



* All Dimensions in mm

* The above drawing is a graphical representation of the product. For engineering quality drawings please contact SERAPHIM.

Mechanical Specifications

External Dimensions	1640 x 992 x 40 mm
Weight	19.0kg
Solar Cells	Polycrystalline 156 x 156mm (60pcs)
Front glass	3.2 mm tempered glass, low iron
Frame	Anodized/ Electrophoretic aluminum alloy
Junction Box	IP65/IP67
Output Cables	4.0 mm ² , symmetrical lengths 900mm
Connector	MC4 Compatible
Maximum Snow Load	550kg/m ²
Maximum Wind Load	200km/h
Hailstone Impact Test	80km/h for 25mm ice ball