

Tiger Pro 72HC-BDVP

535-555 Watt

BIFACIAL MODULE WITH
DUAL GLASS

P-Type

Positive power tolerance of 0~+3%

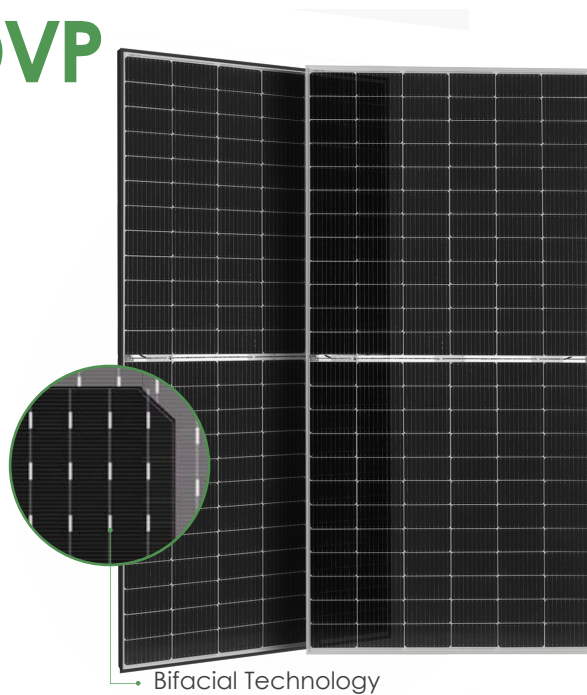
IEC61215(2016), IEC61730(2016)

ISO9001:2015: Quality Management System

ISO14001:2015: Environment Management System

ISO45001:2018

Occupational health and safety management systems



Key Features



Multi Busbar Technology

Better light trapping and current collection to improve module power output and reliability.



PID Resistance

Excellent Anti-PID performance guarantee via optimized mass-production process and materials control.



Higher Power Output

Module power increases 5-25% generally, bringing significantly lower LCOE and higher IRR.



Longer Life-time Power Yield

0.45% annual power degradation and 30 year linear power warranty.



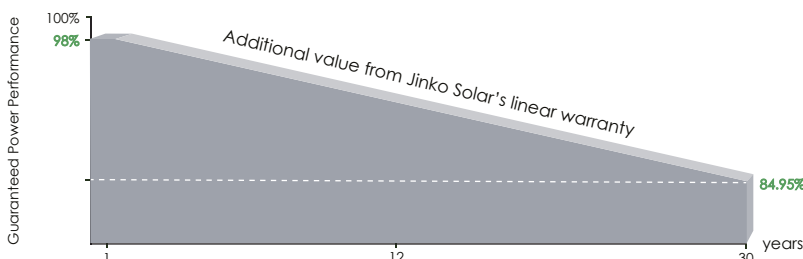
Enhanced Mechanical Load

Certified to withstand: wind load (2400 Pascal) and snow load (5400 Pascal).



POSITIVE QUALITY™
Continuous Quality Assurance

LINEAR PERFORMANCE WARRANTY

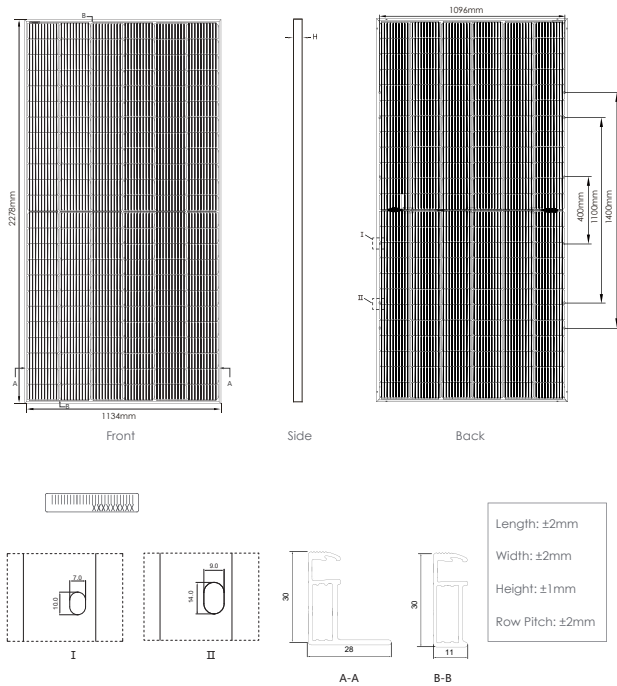


12 Year Product Warranty

30 Year Linear Power Warranty

0.45% Annual Degradation Over 30 years

Engineering Drawings

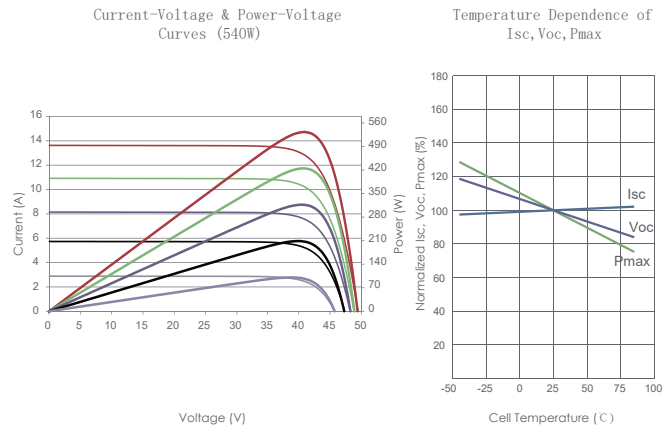


Packaging Configuration

(Two pallets = One stack)

36pcs/pallets, 72pcs/stack, 720pcs/ 40'HQ Container

Electrical Performance & Temperature Dependence



Mechanical Characteristics

Cell Type	P type Mono-crystalline
No. of cells	144 (6×24)
Dimensions	2278×1134×30mm (89.69×44.65×1.18 inch)
Weight	31 kg (68.34bs)
Front Glass	2.0mm, Anti-Reflection Coating
Back Glass	2.0mm, Heat Strengthened Glass
Frame	Anodized Aluminium Alloy
Junction Box	IP68 Rated
Output Cables	TUV 1×4.0mm ² (+): 400mm , (-): 200mm or Customized Length

SPECIFICATIONS

Module Type	JKM535M-72HL4-BDVP		JKM540M-72HL4-BDVP		JKM545M-72HL4-BDVP		JKM550M-72HL4-BDVP		JKM555M-72HL4-BDVP	
	STC	NOCT	STC	NOCT	STC	NOCT	STC	NOCT	STC	NOCT
Maximum Power (Pmax)	535Wp	398Wp	540Wp	402Wp	545Wp	405Wp	550Wp	409Wp	555Wp	413Wp
Maximum Power Voltage (Vmp)	40.94V	37.94V	41.13V	38.08V	41.32V	38.25V	41.51V	38.42V	41.70V	38.59V
Maximum Power Current (Imp)	13.07A	10.49A	13.13A	10.55A	13.19A	10.60A	13.25A	10.65A	13.31A	10.70A
Open-circuit Voltage (Voc)	49.54V	46.76V	49.73V	46.94V	49.92V	47.12V	50.11V	47.30V	50.30V	47.48V
Short-circuit Current (Isc)	13.83A	11.17A	13.89A	11.22A	13.95A	11.27A	14.01A	11.32A	14.07A	11.36A
Module Efficiency STC (%)	20.71%		20.90%		21.10%		21.29%		21.48%	
Operating Temperature(°C)	-40°C~+85°C									
Maximum system voltage	1500VDC (IEC)									
Maximum series fuse rating	30A									
Power tolerance	0~+3%									
Temperature coefficients of Pmax	-0.35%/°C									
Temperature coefficients of Voc	-0.28%/°C									
Temperature coefficients of Isc	0.048%/°C									
Nominal operating cell temperature (NOCT)	45±2°C									
Refer. Bifacial Factor	70±5%									

BIFACIAL OUTPUT-REAR SIDE POWER GAIN

		JKM535M-72HL4-BDVP	JKM540M-72HL4-BDVP	JKM545M-72HL4-BDVP	JKM550M-72HL4-BDVP	JKM555M-72HL4-BDVP
5%	Maximum Power (Pmax)	562Wp	567Wp	572Wp	578Wp	583Wp
	Module Efficiency STC (%)	21.76%	21.95%	22.15%	22.36%	22.56%
15%	Maximum Power (Pmax)	615Wp	621Wp	627Wp	633Wp	638Wp
	Module Efficiency STC (%)	23.81%	24.04%	24.26%	24.48%	24.71%
25%	Maximum Power (Pmax)	669Wp	675Wp	681Wp	688Wp	694Wp
	Module Efficiency STC (%)	25.90%	26.13%	26.37%	26.61%	26.86%

*STC: Irradiance 1000W/m²

Cell Temperature 25°C

AM=1.5

NOCT: Irradiance 800W/m²

Ambient Temperature 20°C

AM=1.5

Wind Speed 1m/s