

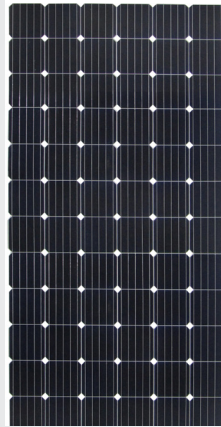
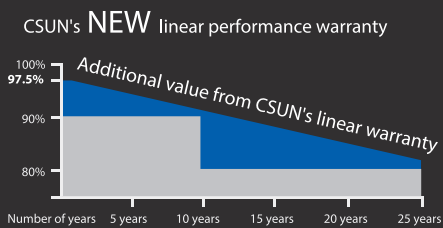
# Poly Mono



## Powerguard insurance global coverage

Within the first year, the output power shall not be less than 97.5% of the minimum output power in CSUN's product datasheet, thereafter the loss of output power shall not exceed 0.7% per year, ending with 80.7% in the 25th year.

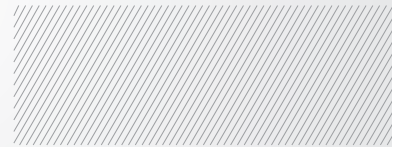
■ CSUN    ■ Standard warranty



## CSUN300-72P

Standard Solar Product

CSUN300-72P  
 CSUN295-72P  
 CSUN290-72P  
 CSUN285-72P  
 CSUN280-72P



**15.49%**  
Module efficiency



Industry leading conversion efficiency

**300 W**  
Highest power output



Positive tolerance offer

**10 years**  
Material & workmanship warranty



Passed salt mist corrosion testing and ammonia corrosion testing

**25 years**  
Linear power output warranty



Certificated to withstand wind (2400 Pa) and snow load (5400 Pa)



Excellent performance under weak light condition



Good temperature coefficient performance enables better output in the tropical zone

- China Sunergy (Nanjing) Co., Ltd. (NASDAQ: CSUN), established in 2004, is a hi-tech corporation with its core business in R&D, manufacturing, and sale of high efficiency silicon based solar cells and modules.
- As one of the leading PV enterprises in the world, CSUN has delivered more than 1GW solar products, to residential, commercial, utility and off-grid projects all around the world.
- Through strict selection of raw materials, stringent quality control and rigorous test in state of the art facilities in Nanjing and Shanghai, CSUN has always committed to higher efficiency, more stable and better cost performance products.

\* Note: All specifications, warranties, certifications about module of „CSUN“ series also apply to that of „SST“.

All information and data are subject to change without notice.



All rights reserved by CSUN

## Electrical characteristics at Standard Test Conditions (STC)

Module type	CSUN 300-72P	CSUN 295-72P	CSUN 290-72P	CSUN 285-72P	CSUN 280-72P
Maximum Power - P <sub>mpp</sub> (W)	300	295	290	285	280
Positive power tolerance	0~3%				
Open Circuit Voltage - Voc (V)	44.5	44.4	44.3	44.1	44.0
Short Circuit Current - Isc (A)	8.91	8.83	8.75	8.67	8.58
Maximum Power Voltage - V <sub>mpp</sub> (V)	35.8	35.7	35.6	35.4	35.3
Maximum Power Current - I <sub>mpp</sub> (A)	8.37	8.26	8.15	8.05	7.94
Practical module efficiency	17.12%	16.84%	16.55%	16.27%	15.98%
Module efficiency	15.49%	15.24%	14.98%	14.72%	14.46%

Electrical data relates to standard test conditions (STC): irradiance 1000W/m<sup>2</sup>; AM 1.5; cell temperature 25°C measuring uncertainty of power is within ±3%. Certified in accordance with IEC61215, IEC61730-1/2 and UL 1703

## Electrical Characteristics at Normal Operating Cell Temperature (NOCT)

Module type	CSUN 300-72P	CSUN 295-72P	CSUN 290-72P	CSUN 285-72P	CSUN 280-72P
Maximum Power - P <sub>mpp</sub> (W)	220	217	213	209	206
Maximum Power Voltage - V <sub>mpp</sub> (V)	32.9	32.5	32.3	32.2	32.1
Maximum Power Current - I <sub>mpp</sub> (A)	6.71	6.67	6.59	6.50	6.41
Open Circuit Voltage - Voc (V)	41.1	41.0	40.8	40.6	40.5
Short Circuit Current - Isc (A)	7.19	7.01	6.95	6.89	6.81

Electrical data relates to normal operating cell temperature (NOCT): irradiance 800W/m<sup>2</sup>; wind speed 1 m/s; cell temperature 45°C; ambient temperature 20°C measuring uncertainty of power is within ±3%.

## Temperature Characteristics

Voltage Temperature Coefficient	-0.292%/K
Current Temperature Coefficient	+0.045%/K
Power Temperature Coefficient	-0.408%/K

## Maximum Ratings

Maximum system voltage(V)	1000
Series fuse rating(A)	20

## Mechanical Characteristics

Dimensions	1956 × 990 × 50 mm (L×W×H)
Weight	23.8 kg
Frame	anodized aluminum profile
Front glass	White toughened safety glass, 3.2 mm
Cell Encapsulation	EVA (Ethylene-Vinyl-Acetate)
Back Sheet	composite film
Cells	6 × 12 pieces polycrystalline solar cells series strings (156 mm × 156 mm)
Junction Box	with 6 bypass diodes
Cable	length 900 mm, 1 × 4 mm <sup>2</sup>

## Packaging

Dimensions (L × W × H)	1990×1120×112 mm
Container 20'	200
Container 20'HC	215
Container 40'	480
Container 40'HC	516

## System Design

Temperature range	-40°C to +85°C
Hail	maximum diameter of 25 mm with impact speed of 23 m/s (51.2 mph)
Maximum surface load capacity	5400 Pa

## Dimensions

